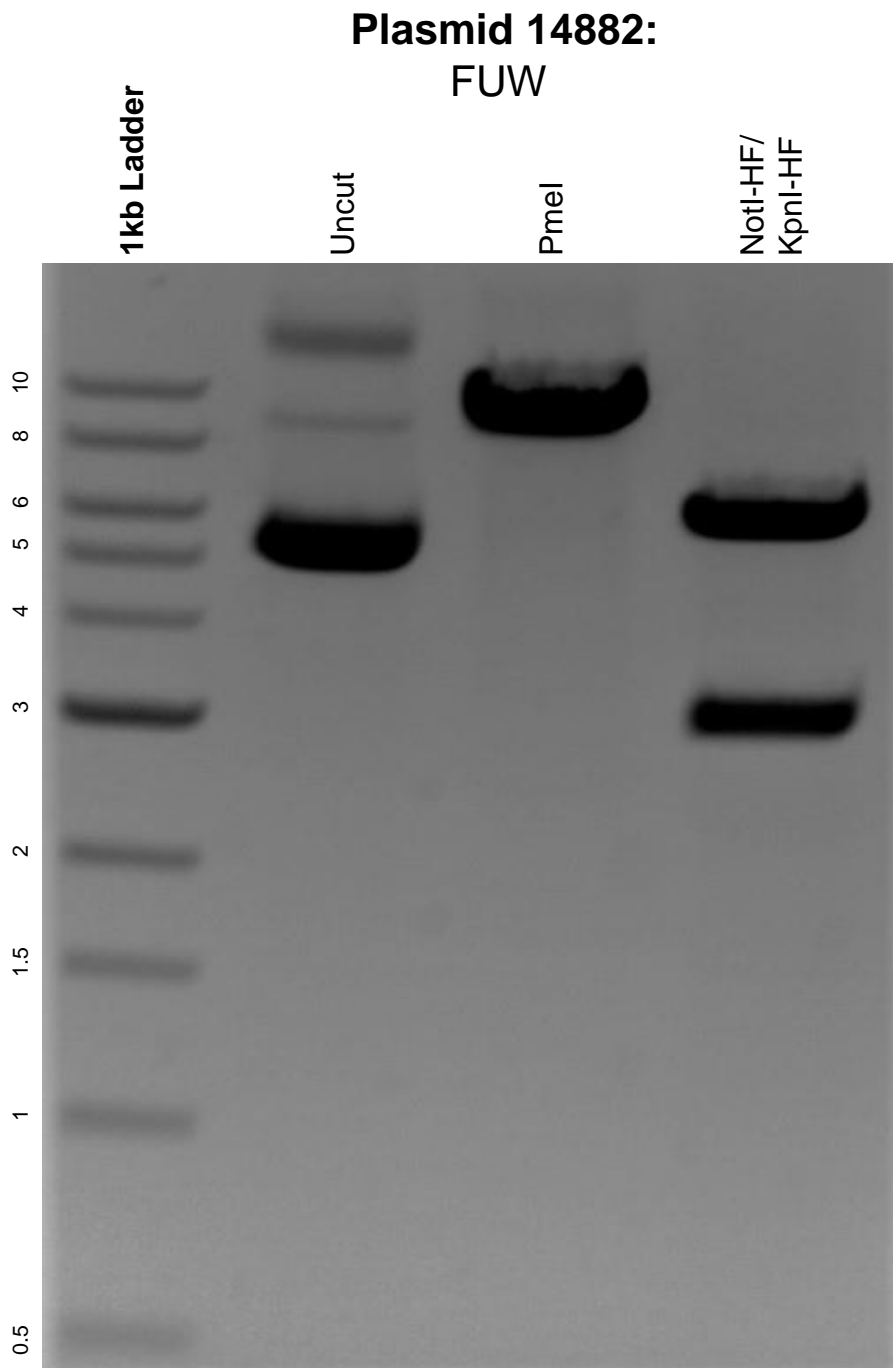


This gel depicts the NEB 1kb ladder and a digestion of the plasmid FUW with the following enzymes: PmeI, NotI-HF and KpnI-HF.



DNA digested with PmeI single digests and NotI-HF/ KpnI-HF double digest for **2 hours**.

Gel: 0.8% agarose stained with 6 uL of ethidium bromide.

Ran for 1.5 hours at 100 volts.