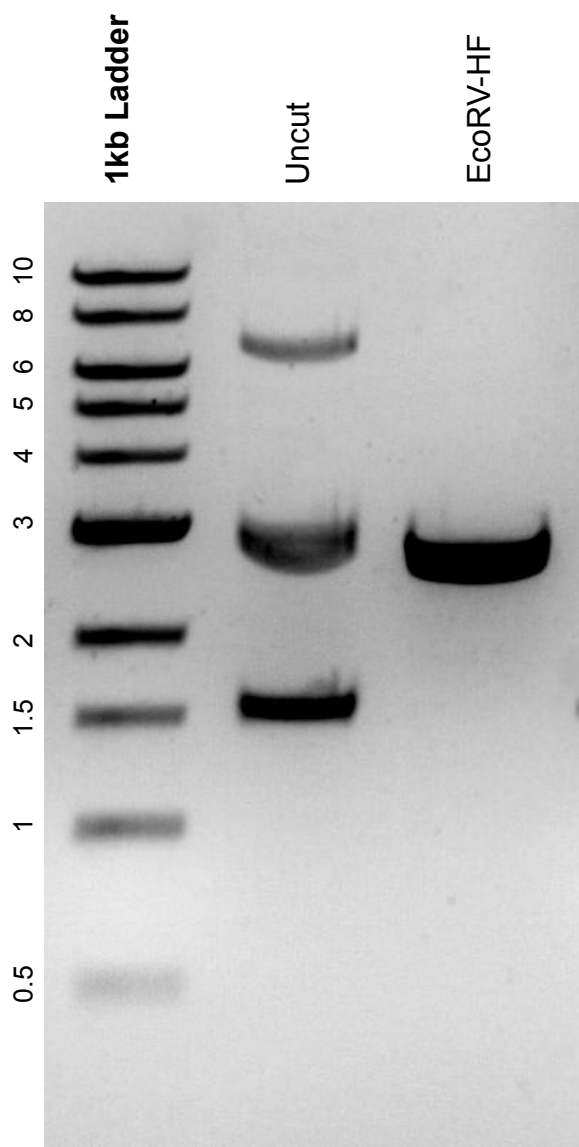


This gel depicts the NEB 1kb Ladder and a digestion of the plasmid QPM-sgR (pTaU3) with the following enzymes: EcoRV-HF

Plasmid 140448:
QPM-sgR (pTaU3)



DNA digested with EcoRV-HF single digest for **2 hours**.
Gel: 0.8% agarose stained with SYBR Safe.
Ran for 1.25 hours at 100 volts.