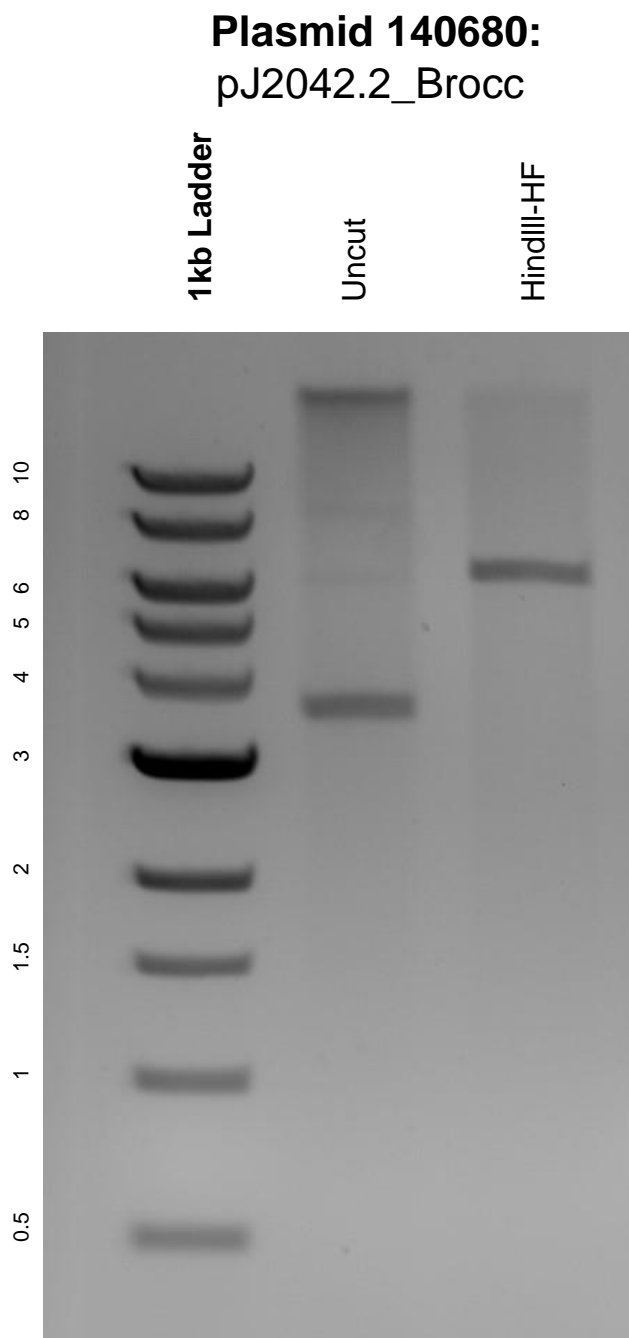


This gel depicts the NEB 1kb ladder and a digestion of the plasmid pJ2042.2_Brocc with the following enzymes: HindIII-HF



DNA digested with HindIII-HF single digest for **2 hours**.
Gel: 0.8% agarose stained with 6 uL of ethidium bromide.
Ran for 1.5 hours at 100 volts.