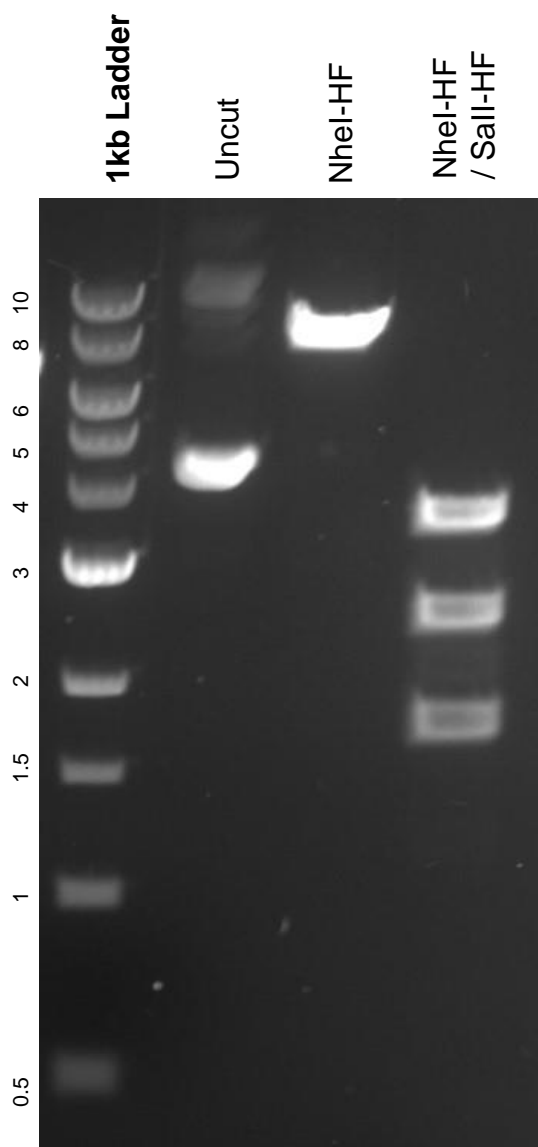


This gel depicts the NEB 1kb Ladder and a digestion of the plasmid pXG237 with the following enzymes: NheI-HF and Sall-HF

Plasmid 141281
pXG237



DNA digested with NheI-HF single digest and NheI-HF/Sall-HF double digests for **2 hours**.
Gel: 0.8% agarose stained with 5 uL of ethidium bromide.
Ran for 1.5 hours at 100 volts.