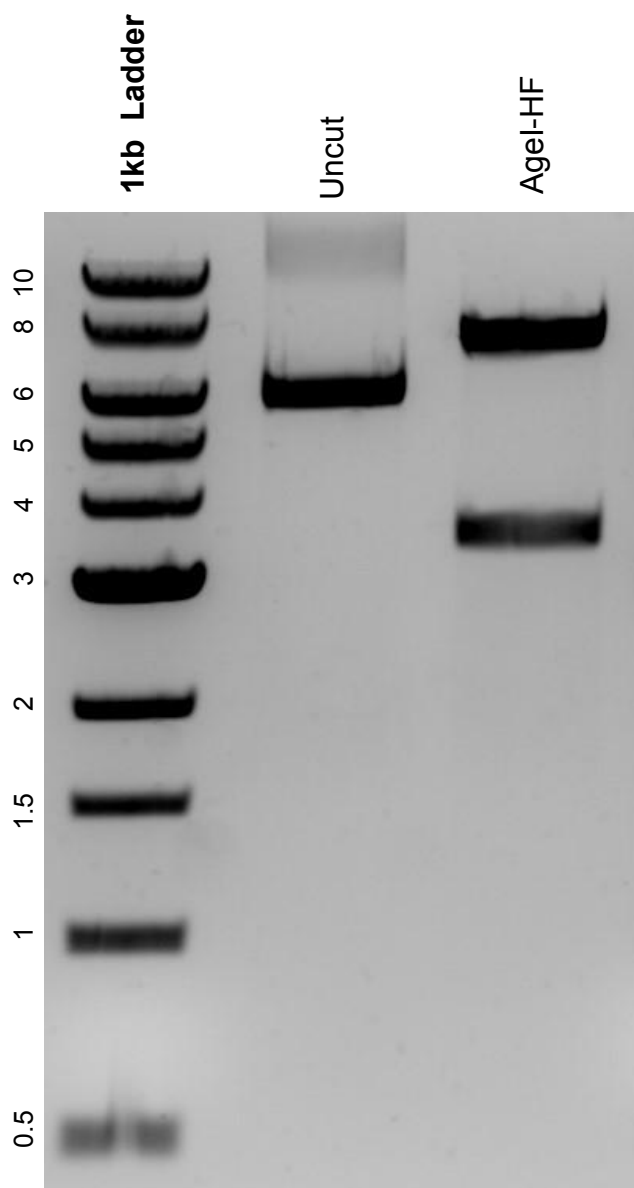


This gel depicts the NEB 1kb Ladder and a digestion of the plasmid TFORF2626 with the following enzymes: AgeI-HF

Plasmid 143595
TFORF2626



DNA digested with AgeI-HF single digest for **2 hours**.
Gel: 0.8% agarose stained with SYBR Safe.
Ran for 1.25 hours at 100 volts.