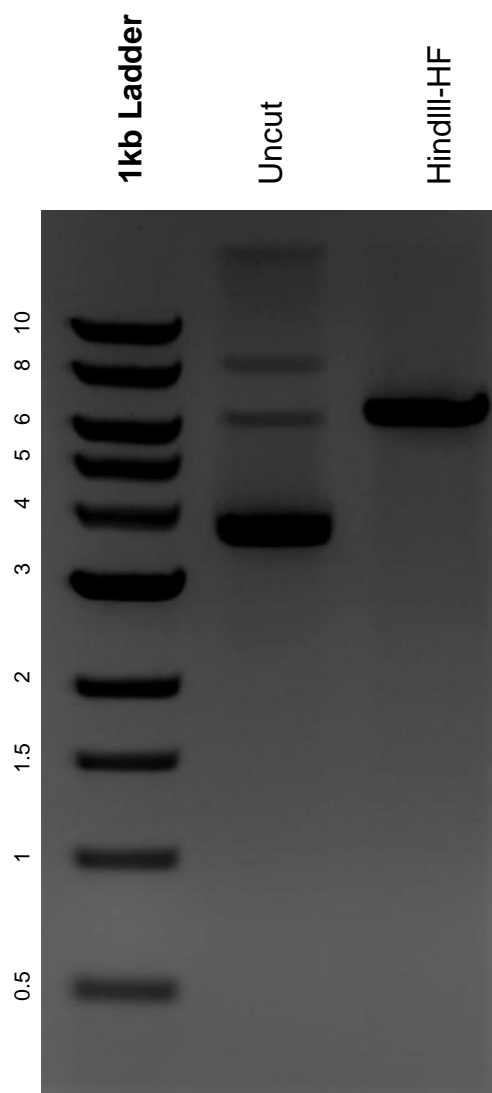


This gel depicts the NEB 1kb ladder and a digestion of the plasmid pET-FleBt with the following enzymes: HindIII-HF.

Plasmid 149302:
pET-FleBt



DNA digested with HindIII-HF single digests for **2 hours**.
Gel: 0.8% agarose stained with 6 uL of ethidium bromide.
Ran for 1.5 hours at 100 volts.