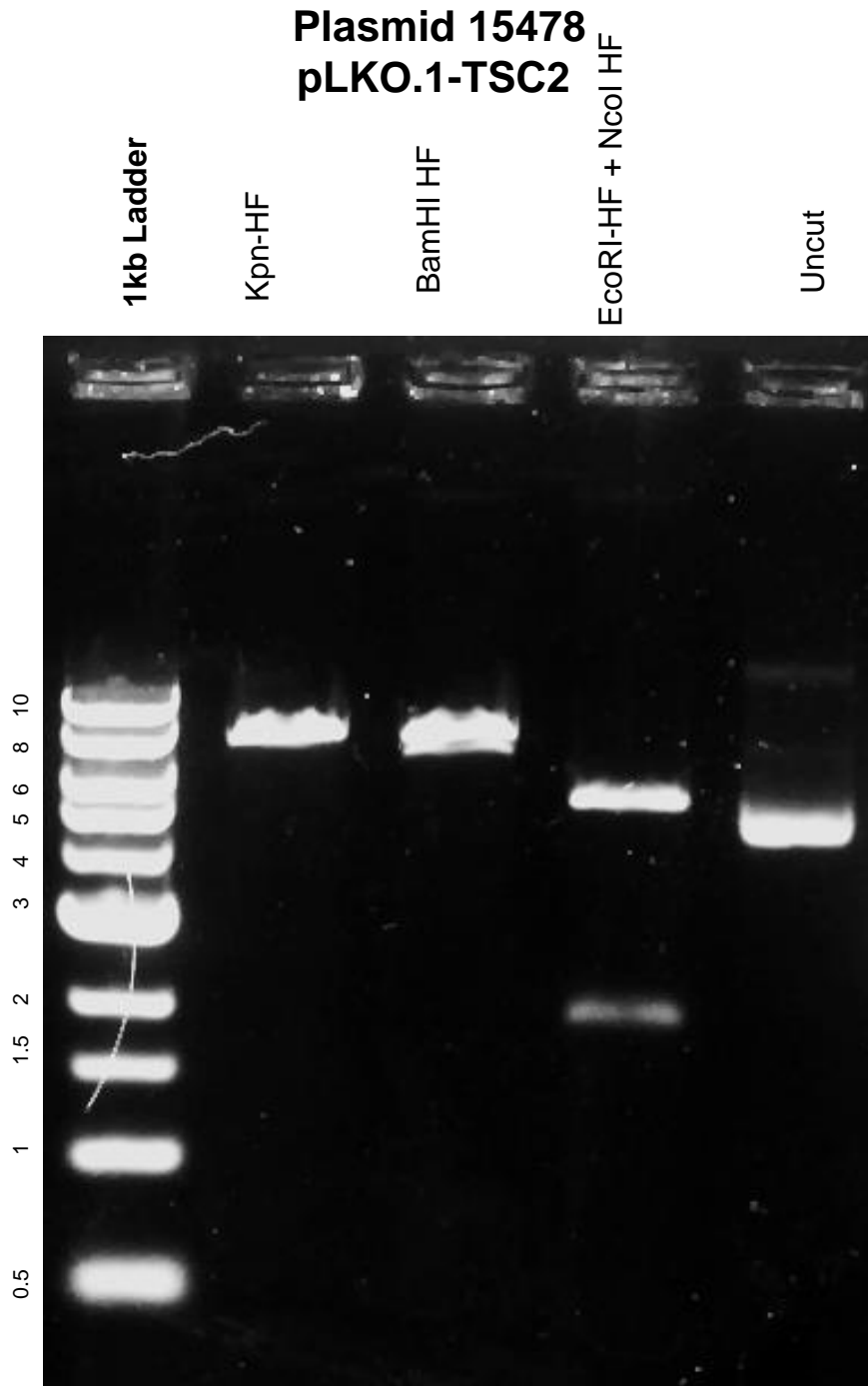


This gel depicts the NEB 1kb ladder and a digestion of the plasmid 15478 with the following enzymes: Kpn HF, BamHI HF, EcoRI HF, NcoI HF



DNA digested with Kpn Hf, BamHI single digest and EcoRIHF and NcoI Double digest for **2 hours**

Gel: 0.8% TAE stained with 150 ml 1X TAE and 4 μ L of ethidium bromide
Ran for 1.5 hours at **84** volts