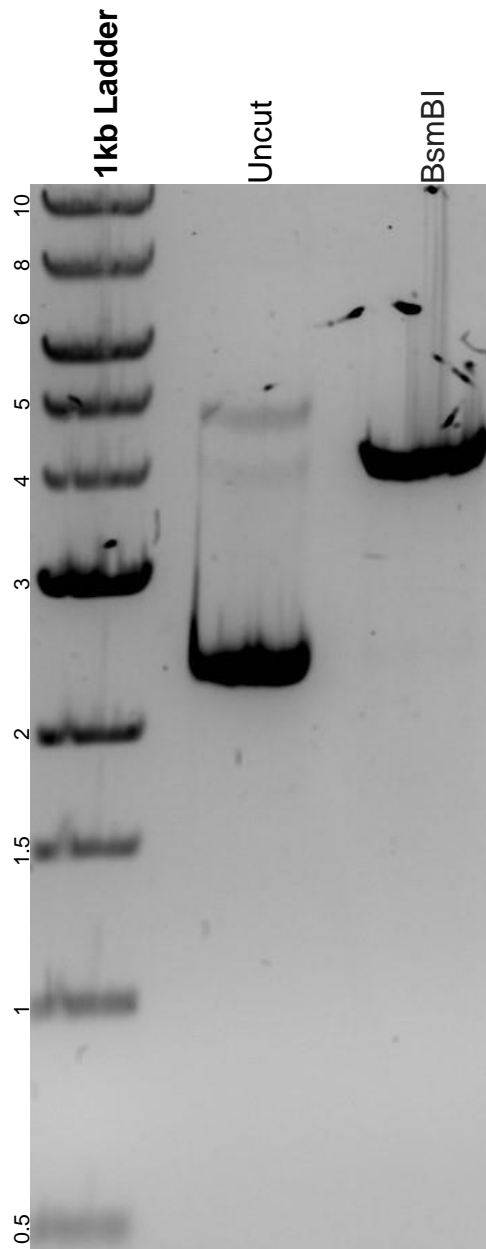


This gel depicts the NEB 1kb ladder and a digestion of the plasmid lvi0 LhGR with the following enzyme(s): BsmBI.

Plasmid 153408:
lvi0 LhGR



DNA digested with a BsmBI single digest for **2 hours**.
Gel: 0.8% agarose stained with 5 uL of SYBR Safe.
Ran for 1.5 hours at 100 volts.