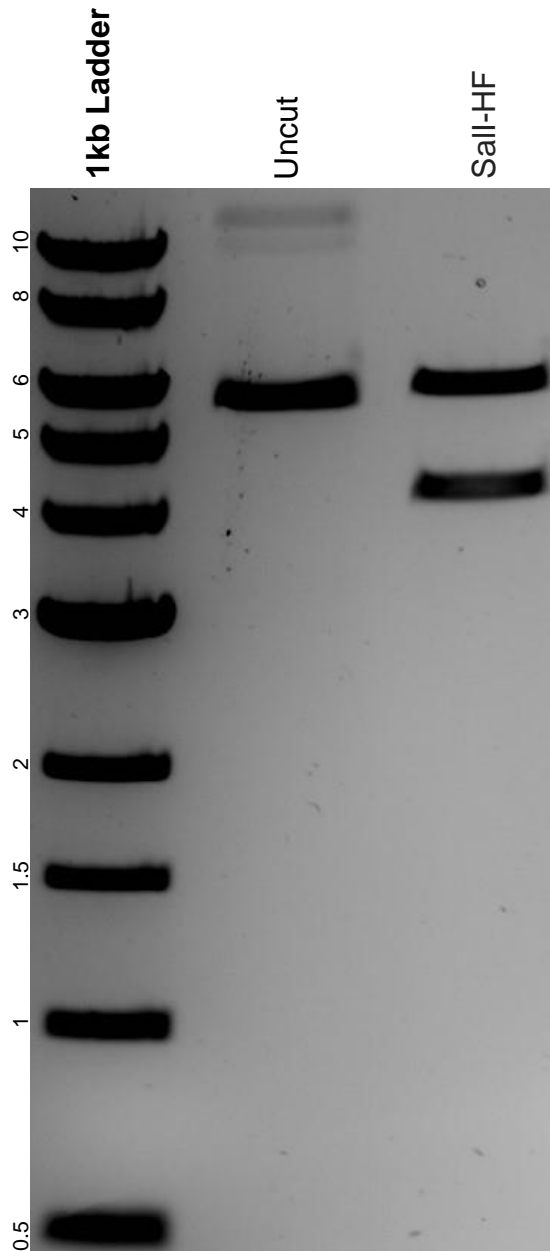


This gel depicts the NEB 1kb ladder and a digestion of the plasmid pTol2-ubi:loxP-mScarletNLS-SV40pA-loxp-QFGal4-SV40pA with the following enzyme(s): Sall-HF.

**Plasmid 155125:**

pTol2-ubi:loxP-mScarletNLS-SV40pA-loxp-QFGal4-SV40pA



DNA digested with a Sall-HF single digest for **2 hours**.  
Gel: 0.8% agarose stained with 5 uL of SYBR Safe.  
Ran for 1.5 hours at 100 volts.