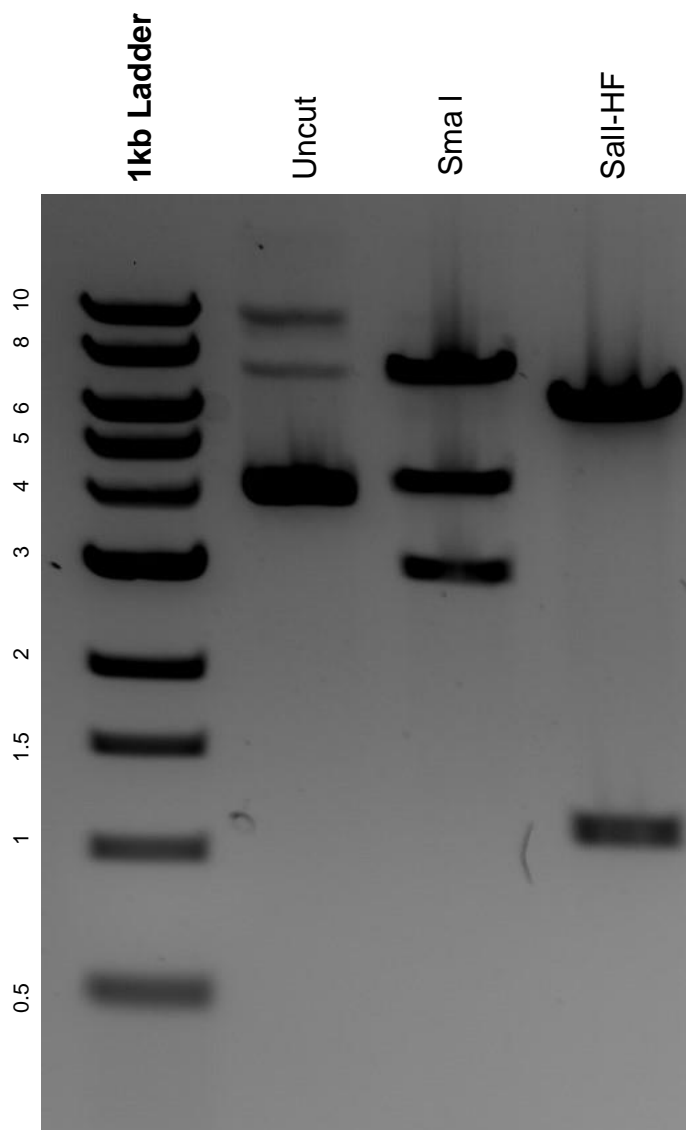


This gel depicts the NEB 1kb ladder and a digestion of the plasmid pTR-UF11 with the following enzymes: Sall-HF and Sma I.

Plasmid 157970:
pTR-UF11



DNA digested with Sall-HF and Sma I single digest for **2 hours**.
Gel: 0.8% agarose stained with 6 uL of ethidium bromide.
Ran for 1.5 hours at 100 volts.