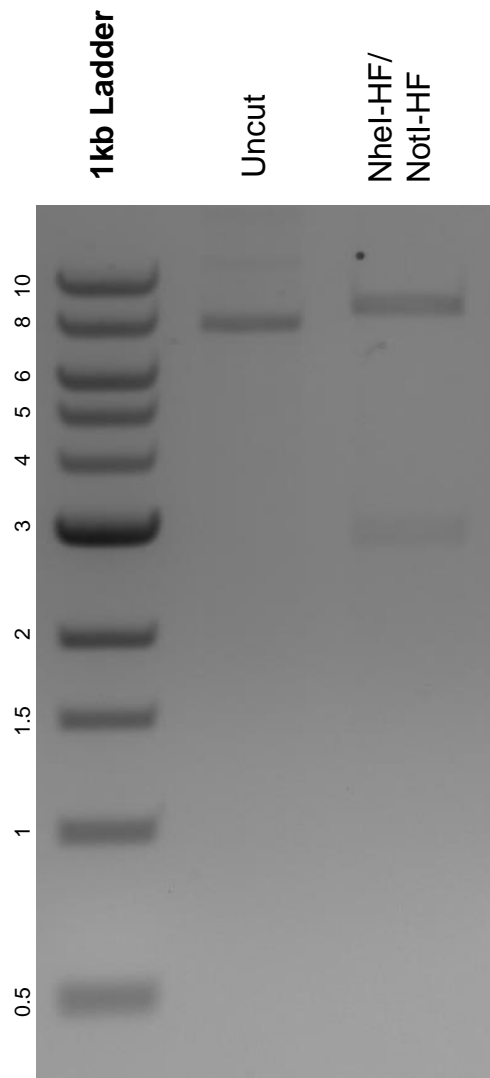


This gel depicts the NEB 1kb ladder and a digestion of the plasmid pW5Y_Apr with the following enzymes: NheI-HF and NotI-HF.

Plasmid 158211:
pW5Y_Apr



DNA digested with NheI-HF and NotI-HF double digest for **2 hours**.
Gel: 0.8% agarose stained with 6 uL of ethidium bromide.
Ran for 1.5 hours at 100 volts.