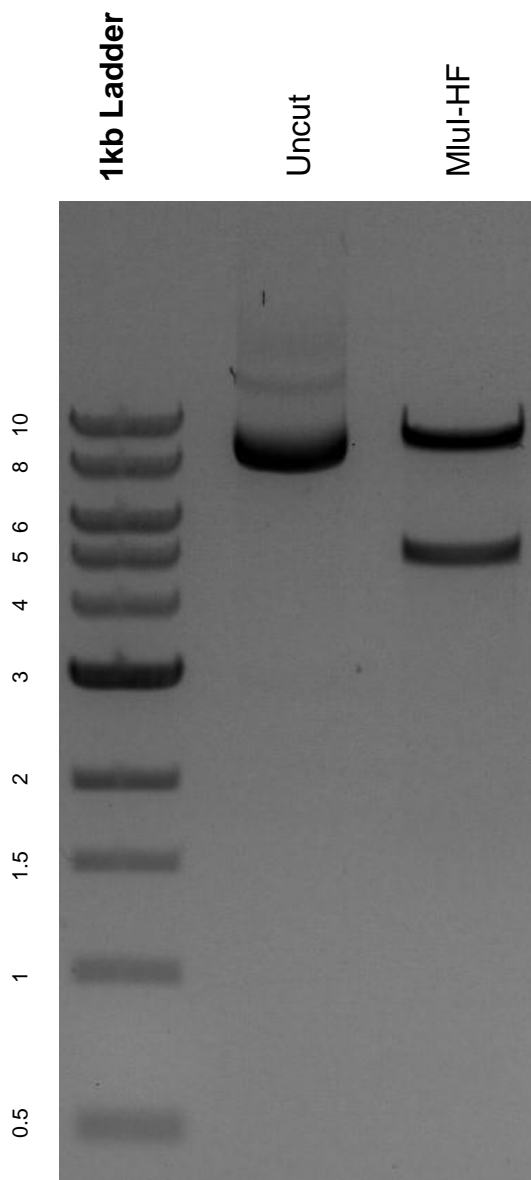


This gel depicts the NEB 1kb ladder and a digestion of the plasmid pRDA_256 with the following enzyme: MluI-HF.

Plasmid 158581:
pRDA_256



DNA digested with a MluI-HF single digest for **2 hours**.
Gel: 0.8% agarose stained with 5 uL of ethidium bromide.
Ran for 1.5 hours at 100 volts.