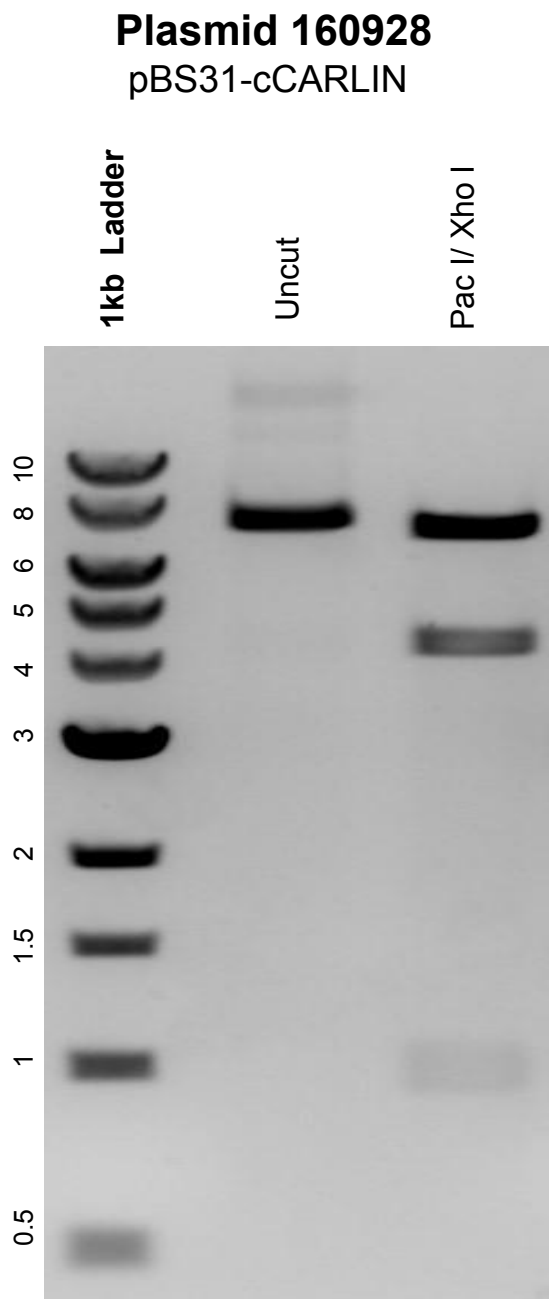


This gel depicts the NEB 1kb Ladder and a digestion of the plasmid pBS31-cCARLIN with the following enzymes: Pac I, Xho I



DNA digested with Pac I/ Xho I double digest for **2 hours**.
Gel: 0.8% agarose stained with SYBR Safe.
Ran for 1.25 hours at 100 volts.