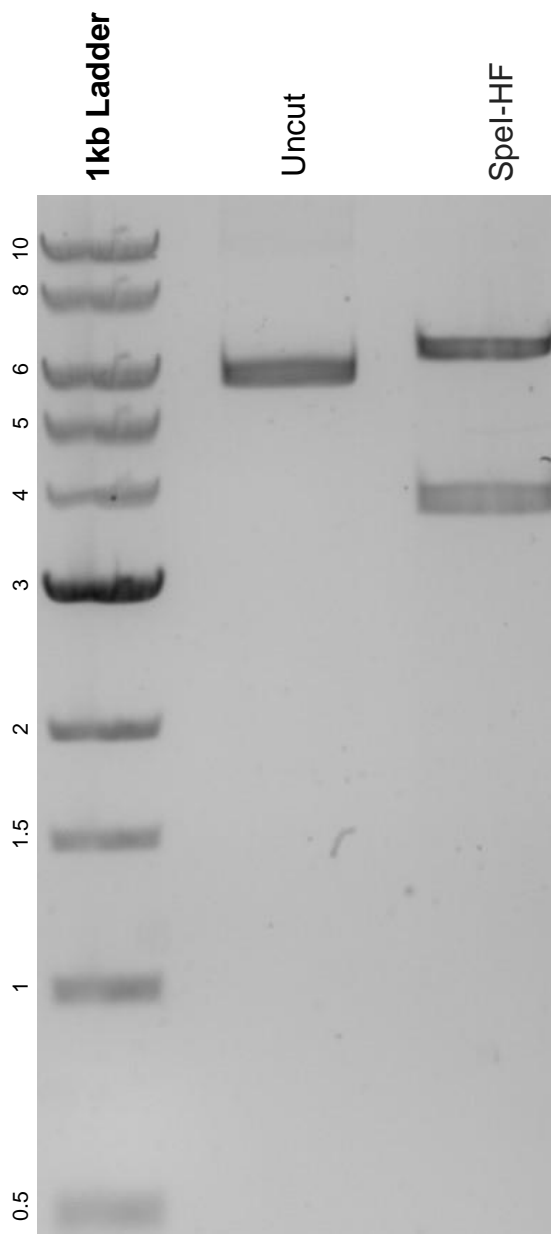


This gel depicts the NEB 1kb ladder and a digestion of the plasmid pMOS007: PercevalHR ATP/ADP sensor (cytosolic) with the following enzyme(s): Spel-HF.

Plasmid 163061:
pMOS007: PercevalHR ATP/ADP sensor (cytosolic)



DNA digested with a Spel-HF single digests for **2 hours**.
Gel: 0.8% agarose stained with 5 uL of SYBR Safe.
Ran for 1.5 hours at 100 volts.