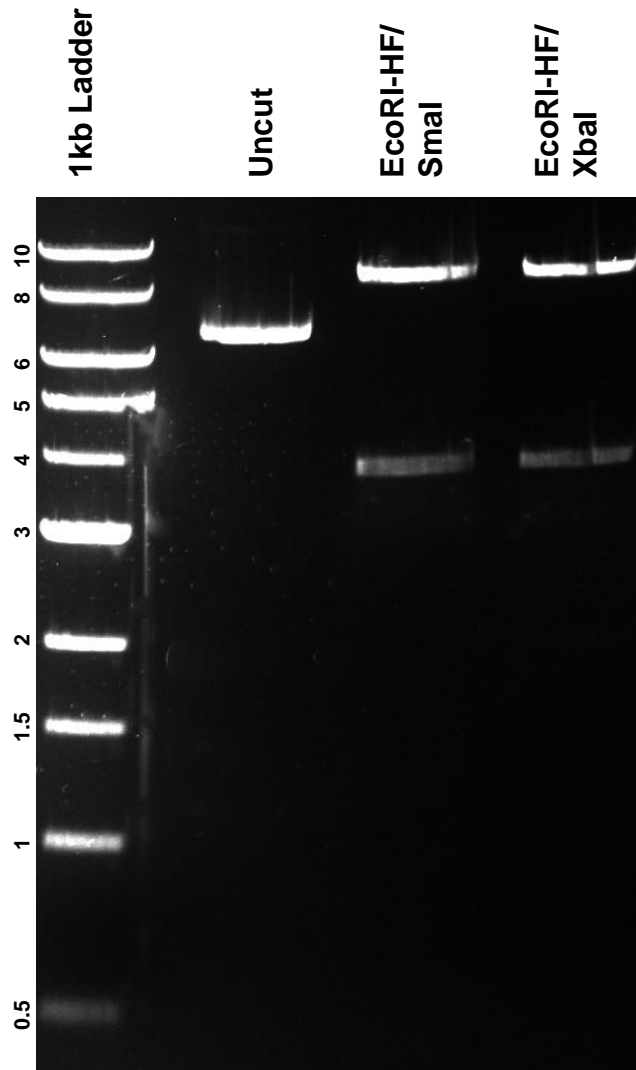


This gel depicts the NEB 1kb Ladder and a digestion of the plasmid pLVX-NPC1(WT)-FLAG with the following enzyme(s): **EcoRI-HF**, **Sma I**, **EcoRI-HF**, and **XbaI**.

Plasmid 164972
pLVX-NPC1(WT)-FLAG



DNA digested with **EcoRI-HF/ SmaI** and **EcoRI-HF/ XbaI** single digest(s) for **1 hour**.
Gel: **0.8%** agarose stained with **6 uL** of SYBR Safe.
Ran for **1.15** hours at **100** volts.