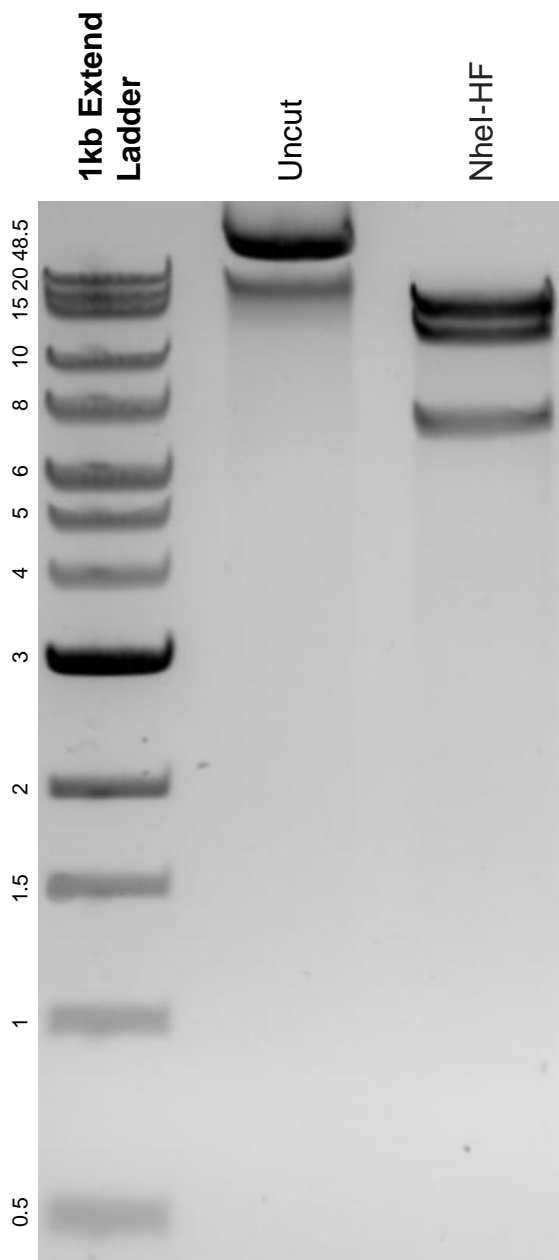


This gel depicts the NEB 1kb extend ladder and a digestion of the plasmid pMasterK with the following enzyme(s): NheI-HF.

**Plasmid 165081:
pMasterK**



DNA digested with an NheI-HF single digest for **2 hours**.
Gel: 0.8% agarose stained with 5 uL of SYBR Safe.
Ran for 1.5 hours at 100 volts.