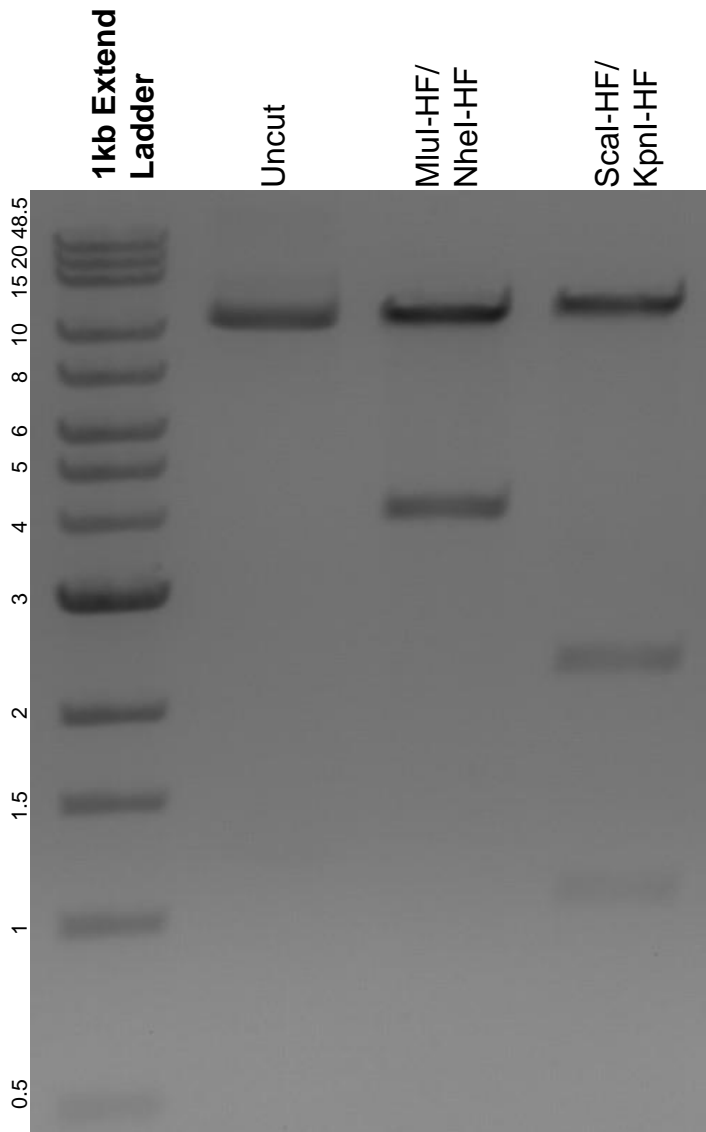


This gel depicts the NEB 1kb extend ladder and a digestion of the plasmid AAVS1-Puro-CAG-fl-STOP-fl-ZEB2-GFP-Flag-WPRE-poly(A) with the following enzymes: MluI-HF, NheI-HF, Scal-HF, and KpnI-HF.

**Plasmid 165456:**  
AAVS1-Puro-CAG-fl-STOP-fl-ZEB2-GFP-  
Flag-WPRE-poly(A)



DNA digested with MluI-HF/NheI-HF and Scal-HF/KpnI-HF double digests for **2 hours**.  
Gel: 0.8% agarose stained with 5 uL of ethidium bromide.  
Ran for 1.5 hours at 100 volts.