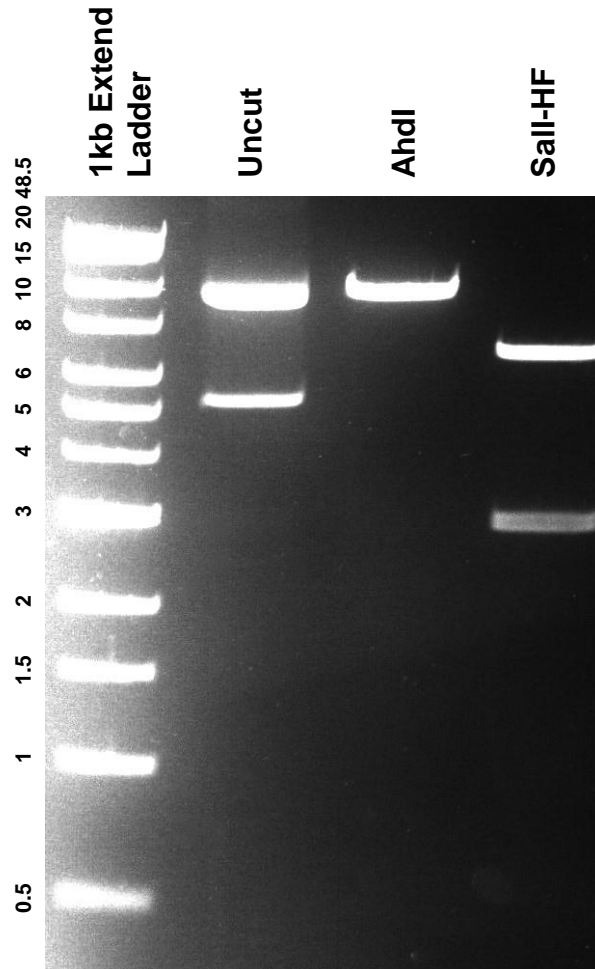


This gel depicts the NEB 1kb Extend Ladder and a digestion of the plasmid **pCDH_blast_MCS_Nard_GFP_LAMIN** with the following enzyme(s): **AhdI** and **Sall-HF**

Plasmid 167340
pCDH_blast_MCS_Nard_GFP_LAMIN



DNA digested with **AhdI** and **Sall-HF** single digests for **1 hour**.
Gel: **0.8%** agarose stained with **6 uL** of SYBR Safe.
Ran for **1.15** hours at **100** volts.