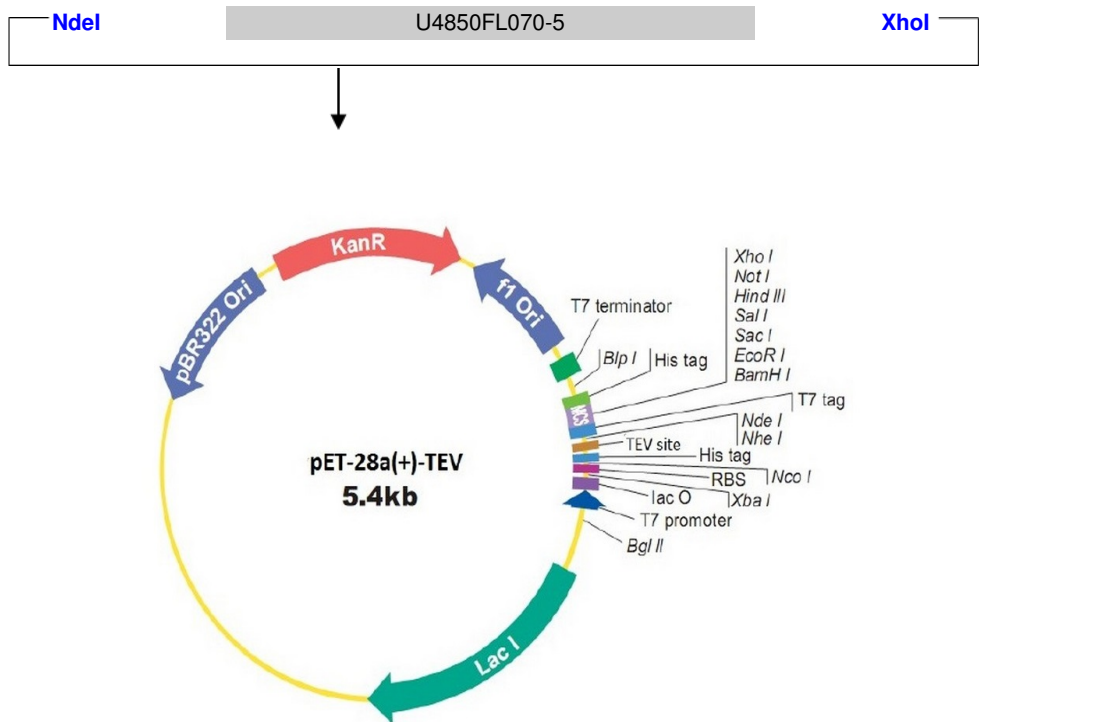


Plasmid Construct Map

The gene was cloned in pET-28a(+)-TEV by NdeI/XhoI .



```

BglII          T7 promoter          lac operator          XbaI          rbs
--- AG ATC TCG ATC CCG CGA AAT TAA TAC GAC TCA CTA TAG GGG AAT TGT GAG CGG ATA ACA ATT CCC CTC TAG AAA TAA TTT TGT TTA ACT TTA AGA AGG AGA

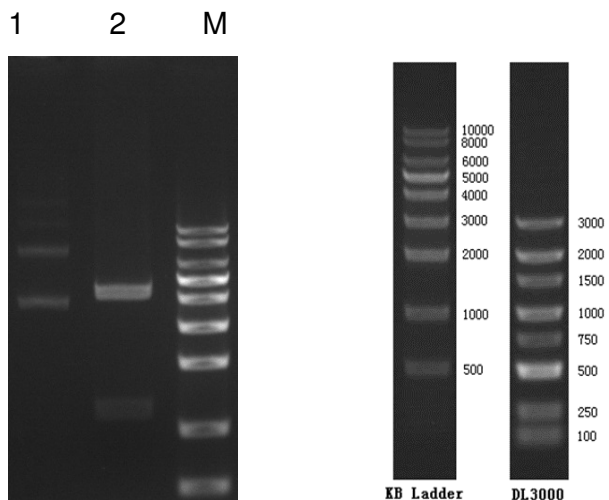
NcoI          His tag
TAT ACC ATG GGC AGC AGC CAT CAT CAT CAT CAC AGC AGC GGC GAG AAT CTT TAT TTT CAG GGC CAT ATG GCT AGC ATG ACT GGT GGA CAG CAA ATG GGT
M G S S H H H H H S S G E N L Y F Q G H M A S M T G G E E M G
TEV site

BamHI EcoRI SacI SalI HindIII NotI XhoI His tag
CGC GGA TCC GAA TTC GAG CTC CGT CGA CAA GCT TGC GGC CGC ACT CGA GCA CCA CCA CCA CCA CCA CTG AGA TCC GGC TGC TAA CAA AGC CC GAA AGG
R G S E F E L R R E A C G R T R A P P P P P L R S G C Stop

BspI          T7 terminator
AAG CTG AGT TGG CTG CTG CCA CCG CTG AGC AAT AAC TAG CAT AAC CCC TTG GGG CCT CTA AAC GGG TCT TGA GGG GTT TTT TG ---
    
```

Notes: This map is based on a commercial vector. Some of the clone sites may be lost after cloning.

Enzyme Digestion



Lane M: KB Ladder
Lane 1: U4850FL070-5 plasmid
Lane 2: U4850FL070-5 plasmid digested by MluI and XhoI

Digestion Conditions:
About 300ng plasmid digested
Digestion in water-bath, 37°C for 40 minutes
1% Agarose Gel

For research use only

860 Centennial Ave., Piscataway, NJ 08854, USA