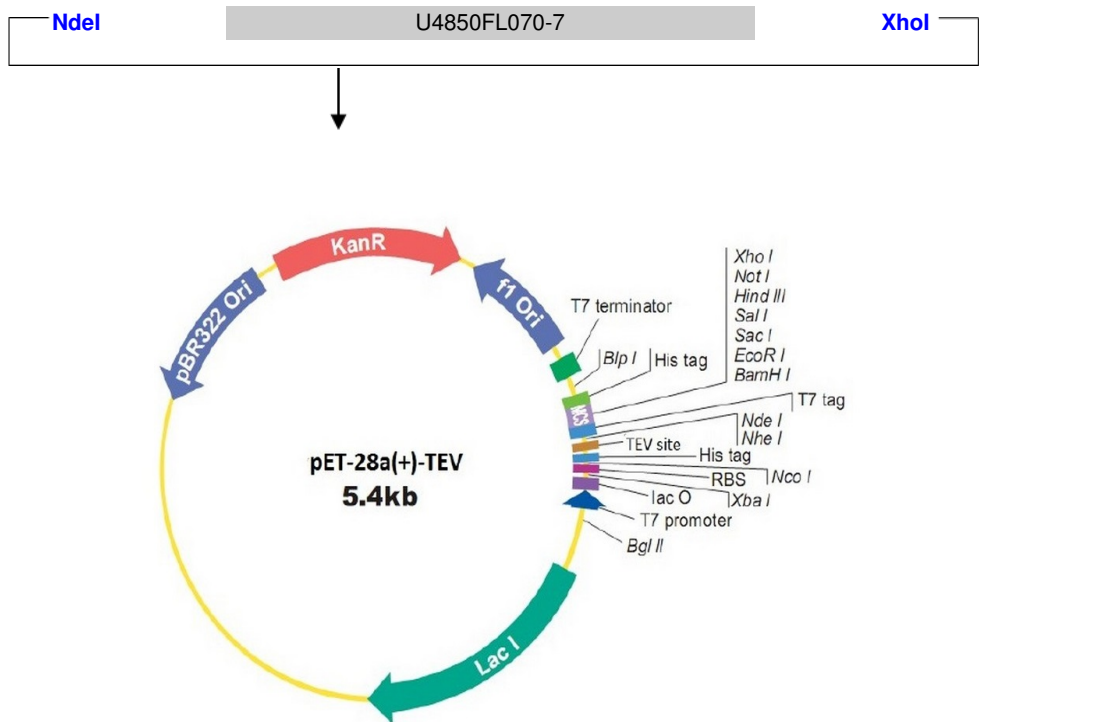


Plasmid Construct Map

The gene was cloned in pET-28a(+)-TEV by NdeI/XhoI .



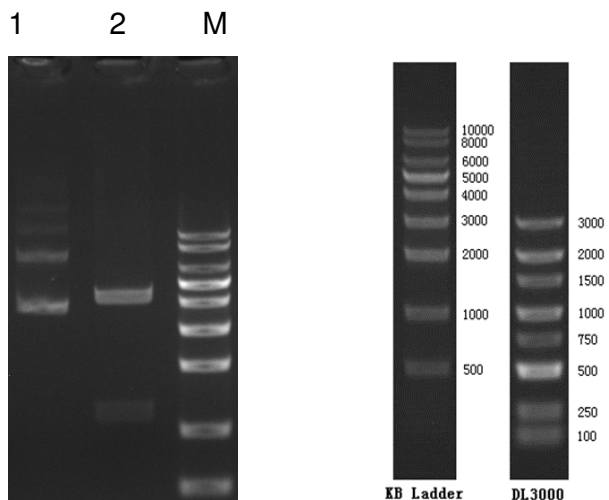
```

      BglII          T7 promoter          lac operator          XbaI          rbs
--- AG ATC TCG ATC CCG CGA AAT TAA TAC GAC TCA CTA TAG GGG AAT TGT GAG CGG ATA ACA ATT CCC CTC TAG AAA TAA TTT TGT TTA ACT TTA AGA AGG AGA

      NcoI          His tag
TAT ACC ATG GGC AGC AGC CAT CAT CAT CAT CAC AGC AGC GGC GAG AAT CTT TAT TTT CAG GGC CAT ATG GCT AGC ATG ACT GGT GGA CAG CAA ATG GGT
      M G S S H H H H H S S G E N L Y F Q G H M A S M T G G E E M G
      TEV site
      BamHI EcoRI SacI SalI HindIII NotI XhoI His tag
CGC GGA TCC GAA TTC GAG CTC CGT CGA CAA GCT TGC GGC CGC ACT CGA GCA CCA CCA CCA CCA CCA CTG AGA TCC GGC TGC TAA CAA AGC CC GAA AGG
      R G S E F E L R R E A C G R T R A P P P P P L R S G C Stop
      BspI          T7 terminator
AAG CTG AGT TGG CTG CTG CCA CCG CTG AGC AAT AAC TAG CAT AAC CCC TTG GGG CCT CTA AAC GGG TCT TGA GGG GTT TTT TG ---
  
```

**Notes:** This map is based on a commercial vector. Some of the clone sites may be lost after cloning.

Enzyme Digestion



Lane M: KB Ladder  
Lane 1: U4850FL070-7 plasmid  
Lane 2: U4850FL070-7 plasmid digested by MluI and XhoI

**Digestion Conditions:**  
About 300ng plasmid digested  
Digestion in water-bath, 37°C for 40 minutes  
1% Agarose Gel

For research use only

860 Centennial Ave., Piscataway, NJ 08854, USA

Toll-Free: 1-877-436-7274

Tel: 1-732-885-9188

Fax: 1-732-210-0262

Email: [order@genscript.com](mailto:order@genscript.com)

Web: [www.genscript.com](http://www.genscript.com)