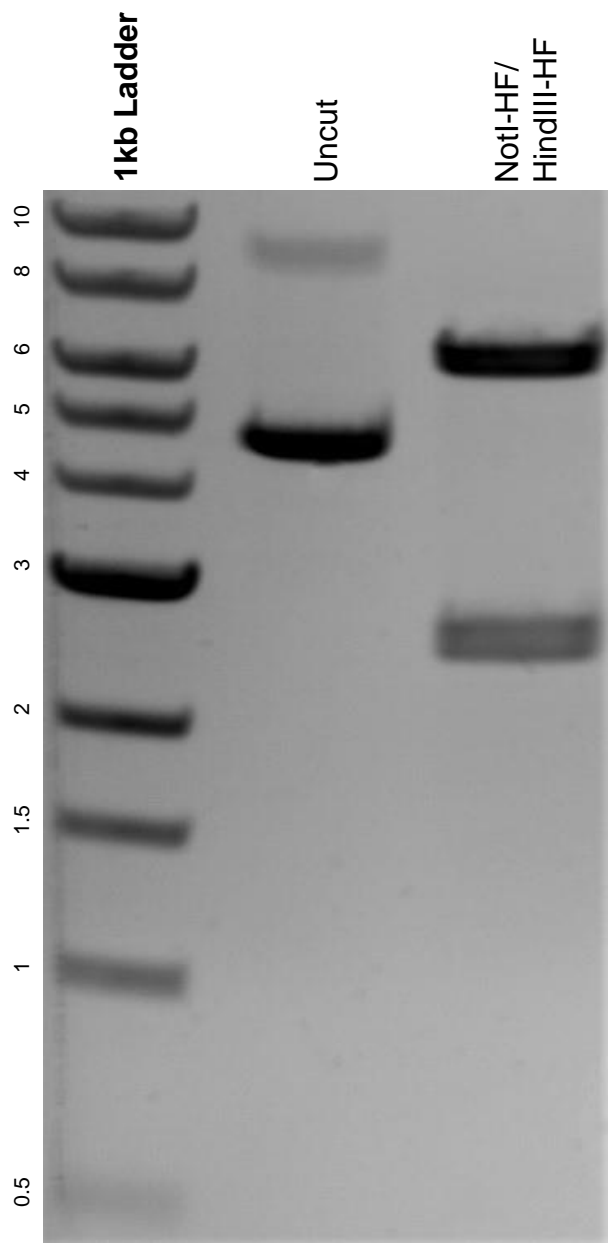


This gel depicts the NEB 1kb ladder and a digestion of the plasmid pcDNA3 - ciRS-7 with the following enzymes: NotI-HF and HindIII-HF.

**Plasmid 169139:**  
pcDNA3 - ciRS-7



DNA digested with NotI-HF/ HindIII-HF double digest for **2 hours**.  
Gel: 0.8% agarose stained with 6 uL of ethidium bromide.  
Ran for 1.5 hours at 100 volts.