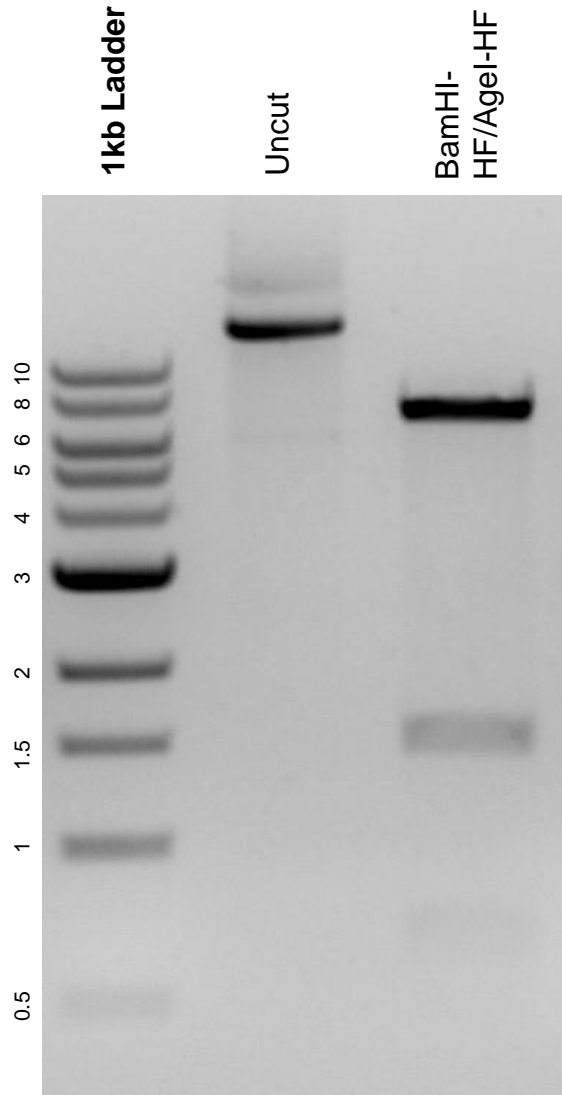


This gel depicts the NEB 1kb ladder and a digestion of the plasmid pLenti CMV/TO Puro DEST (670-1) with the following enzymes: BamHI-HF and AgeI-HF

Plasmid 17293:
pLenti CMV/TO Puro DEST (670-1)



DNA digested with BamHI-HF/Agel-HF double digests for **2 hours**.
Gel: 0.8% agarose stained with 5 uL of ethidium bromide.
Ran for 1.5 hours at 100 volts.