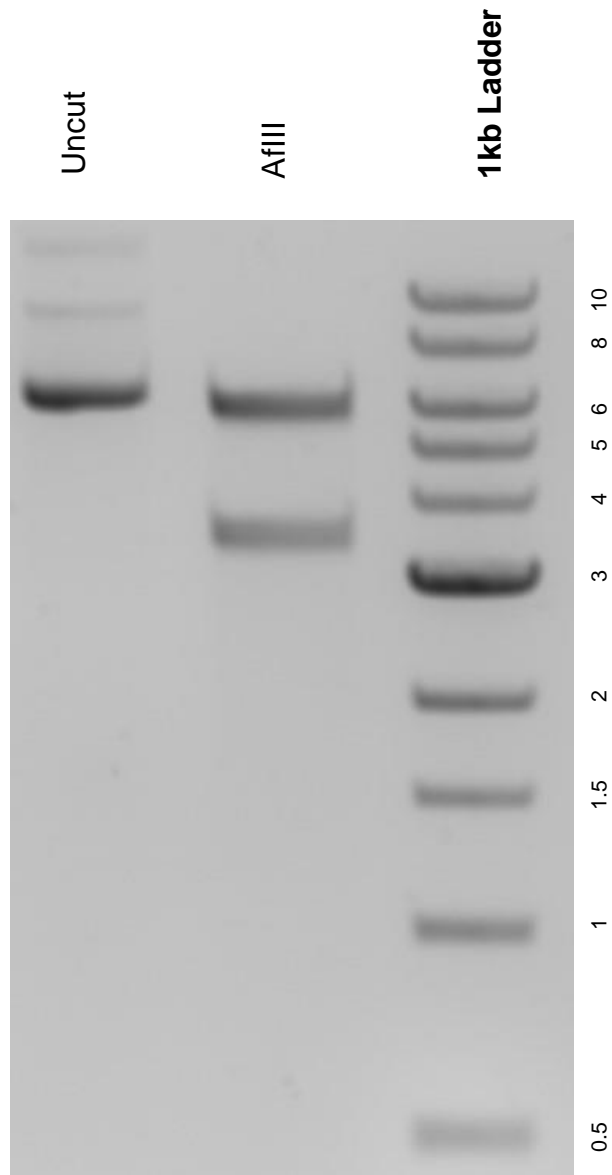


This gel depicts the NEB 1kb ladder and a digestion of the plasmid pLenti CMV Neo DEST (705-1) with the following enzymes: AflIII.

Plasmid 17392:
pLenti CMV Neo DEST (705-1)



DNA digested with AflIII single digest for **2 hours**.
Gel: 0.8% agarose stained with 5 uL of ethidium bromide.
Ran for 1.5 hours at 100 volts.