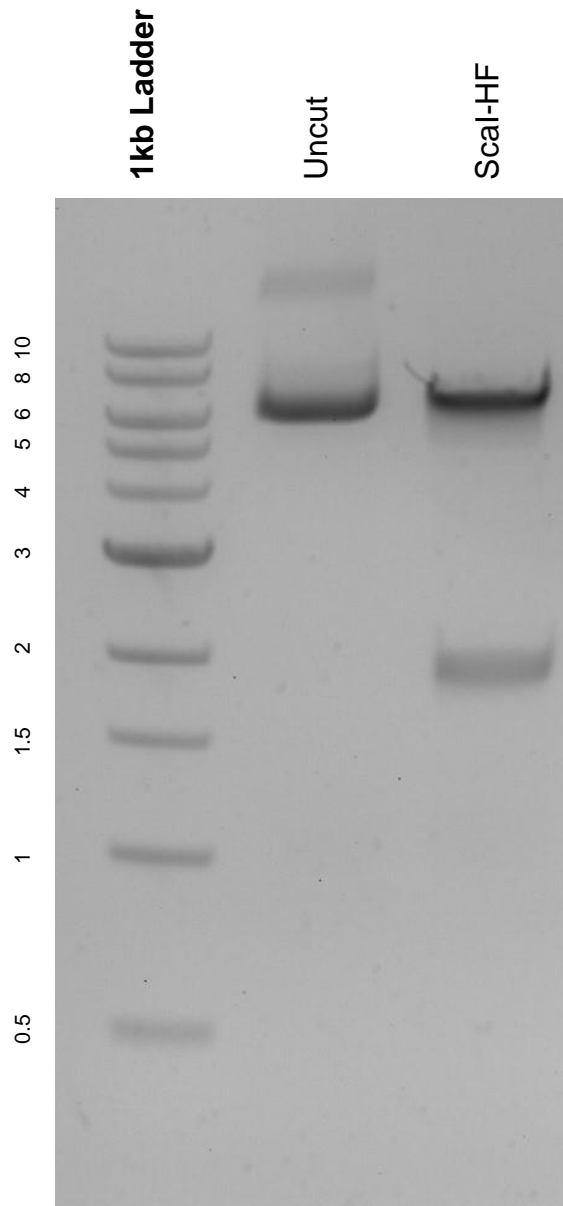


This gel depicts the NEB 1kb ladder and a digestion of the plasmid pLenti CMV GFP Hygro (656-4) with the following enzyme: Scal-HF.

**Plasmid 17446:**  
pLenti CMV GFP Hygro (656-4)



DNA digested with a Scal-HF single digest for **2 hours**.  
Gel: 0.8% agarose stained with 5 uL of ethidium bromide.  
Ran for 1.5 hours at 100 volts.