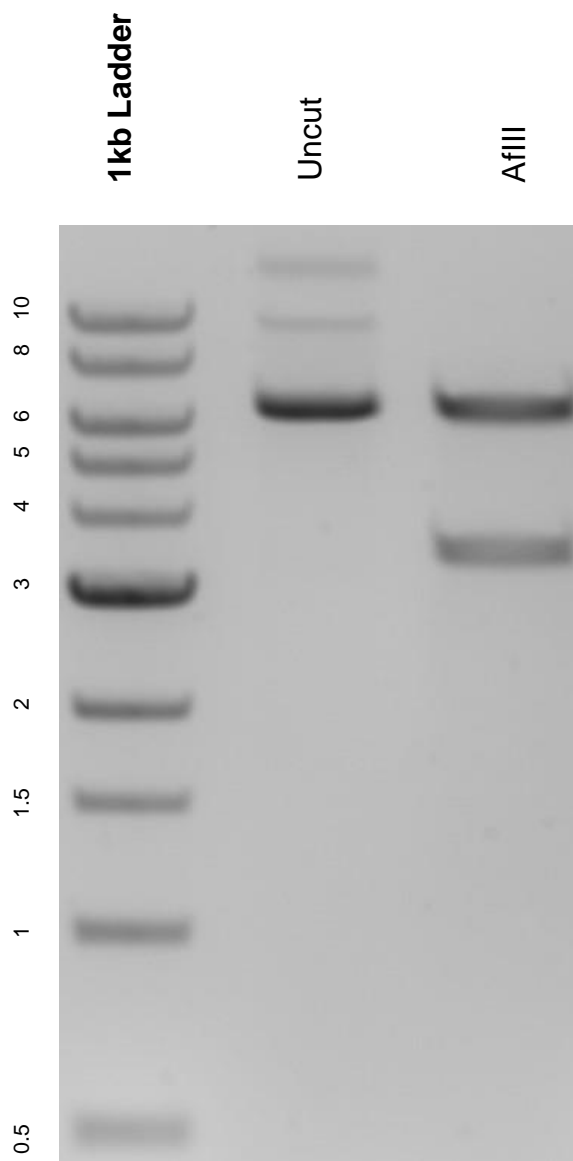


This gel depicts the NEB 1kb ladder and a digestion of the plasmid pLenti CMV Hygro DEST (w117-1) with the following enzymes: AflII.

**Plasmid 17454:**  
pLenti CMV Hygro DEST (w117-1)



DNA digested with AflII single digest for **2 hours**.  
Gel: 0.8% agarose stained with 5 uL of ethidium bromide.  
Ran for 1.5 hours at 100 volts.