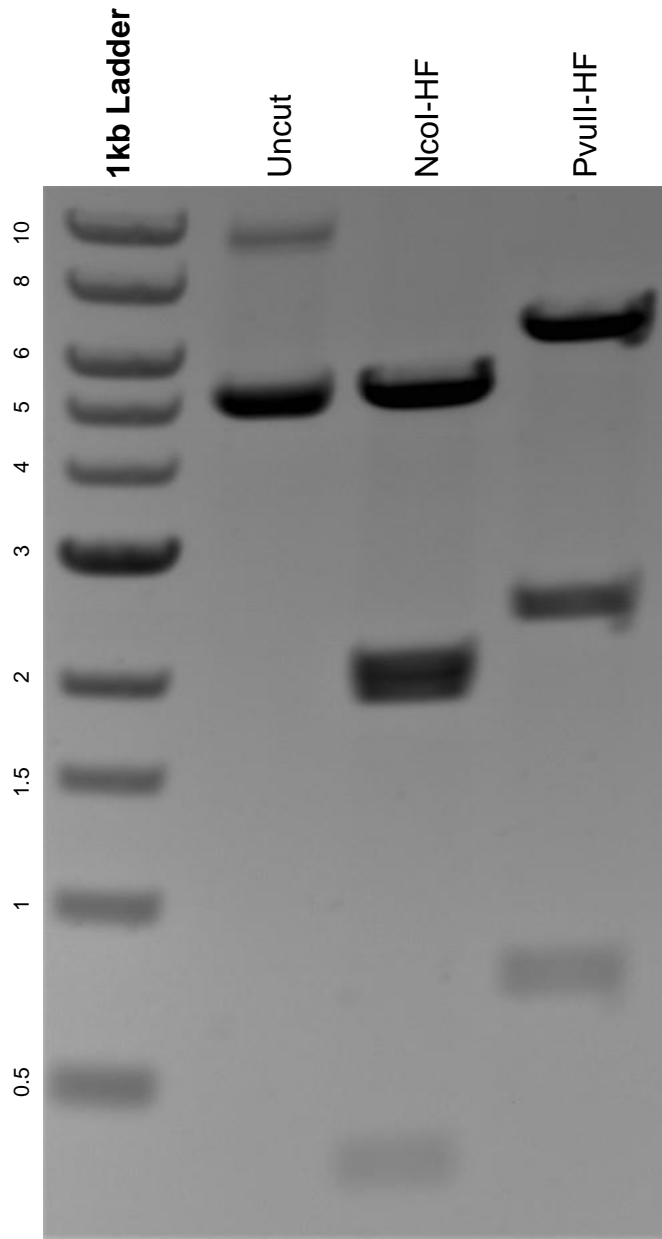


This gel depicts the NEB 1kb ladder and a digestion of the plasmid pLenti CMV Puro LUC (w168-1) with the following enzymes: NcoI-HF and PvuII-HF.

Plasmid 17477:
pLenti CMV Puro LUC (w168-1)



DNA digested with NcoI-HF and PvuII-HF single digests for **2 hours**.
Gel: 0.8% agarose stained with 6 uL of ethidium bromide.
Ran for 1.5 hours at 100 volts.