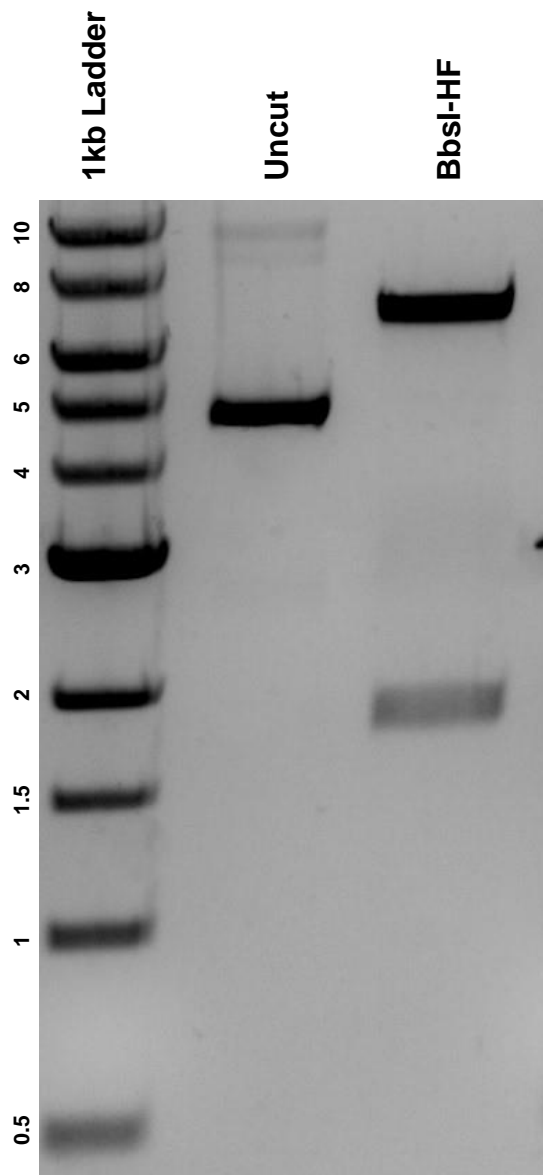


This gel depicts the NEB 1kb Ladder and a digestion of the plasmid **EF.delmFasL.CMV.GFP** with the following enzyme²⁴: BbsI-HF

Plasmid 17620
EF.delmFasL.CMV.GFP



DNA digested with **BbsI-HF** single digest for **2 hours**.
Gel: **0.8%** agarose stained with 5 uL of SYBR Safe.
Ran for **1.5** hours at **100** volts.