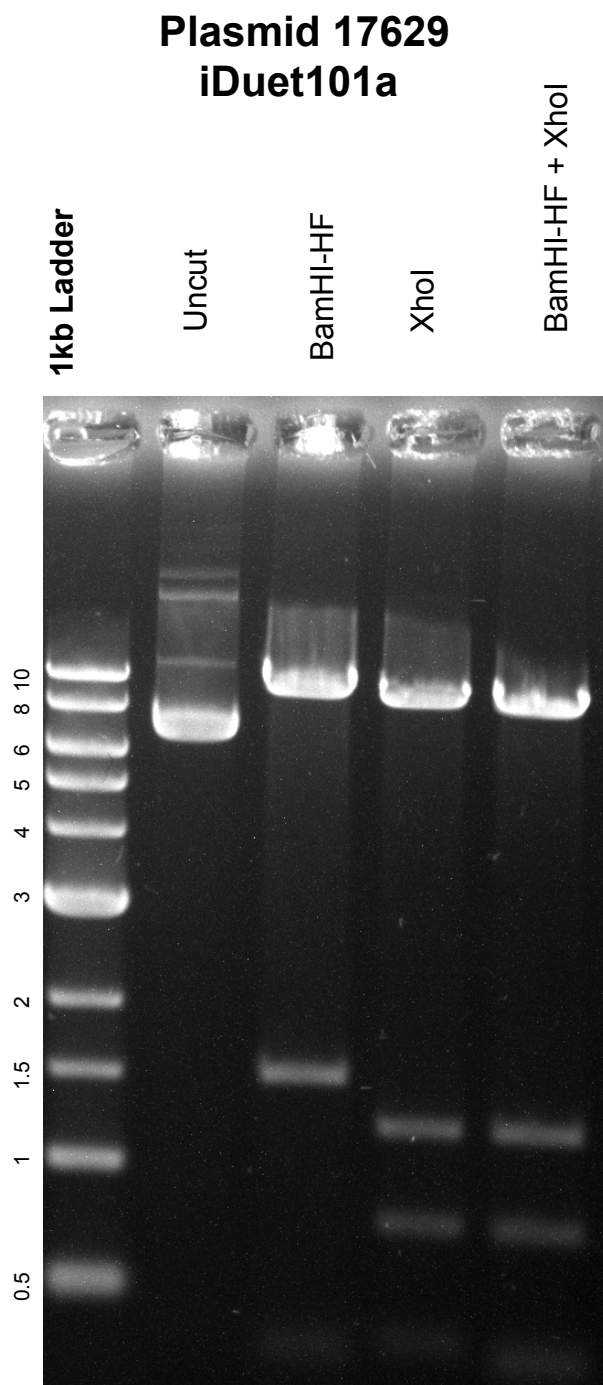


This gel depicts the NEB 1kb ladder and a digestion of the plasmid 17629 with the following enzymes: BamHI-HF, XhoI, BamHI-HF + XhoI



DNA digested with BamHI-HF single , XhoI single, and BamHI-HF + XhoI double digest for **2 hours**

Gel: 0.8% TAE stained with 100 ml 1X TAE and 5uL of ethidium bromide

Ran for 2.5 hours at **47 volts**