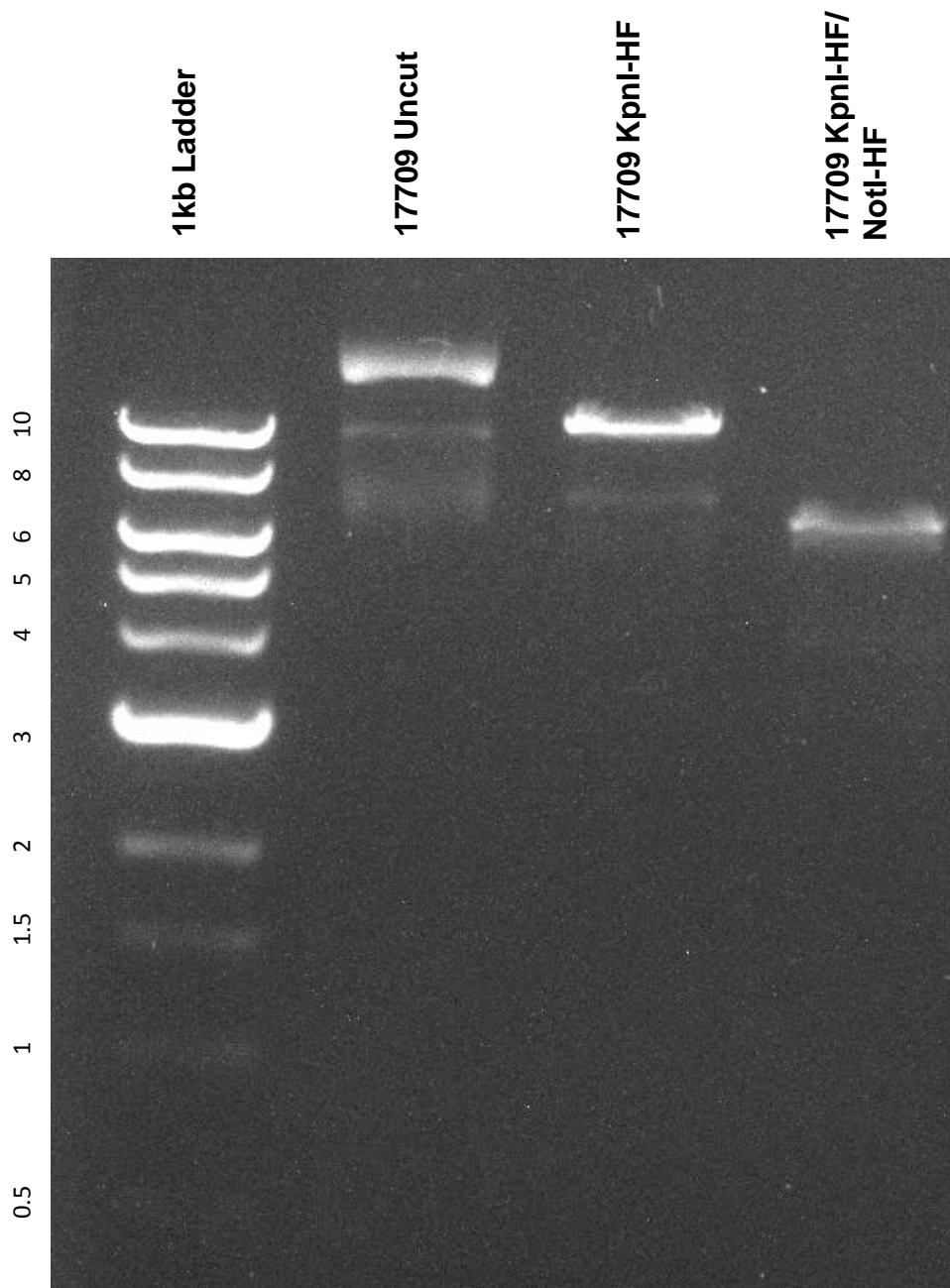


This gel depicts the NEB 1kb ladder and a digestion of the plasmid 17709 with the following enzymes: KpnI-HF and NotI-HF.

Plasmid 17709: RNT2-GFP



DNA digested with KpnI-HF and KpnI-HF/NotI-HF double digest for **2 hours**.
Gel: 0.8% TAE with 0.2% ethidium bromide.
Run for 2 hours at **80** volts.