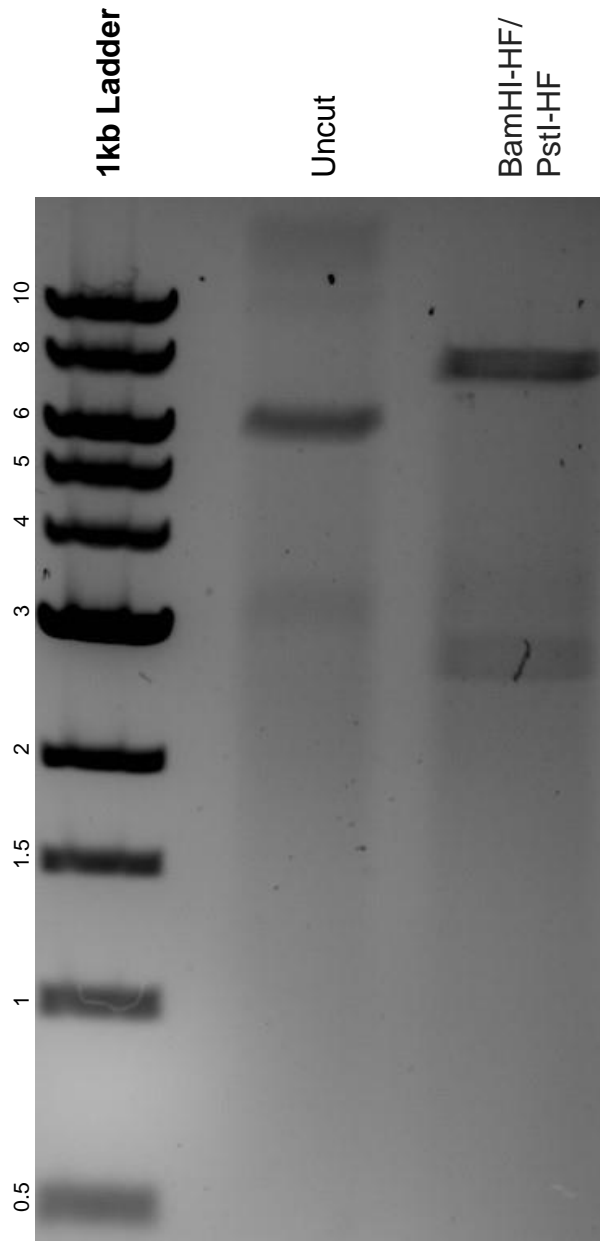


This gel depicts the NEB 1kb ladder and a digestion of the plasmid CMV-HA-hTAF1 with the following enzyme(s): BamHI-HF and PstI-HF.

Plasmid 17997:
CMV-HA-hTAF1



DNA digested with a BamHI-HF/PstI-HF double digest for **2 hours**.
Gel: 0.8% agarose stained with 5 uL of SYBR Safe.
Ran for 1.5 hours at 100 volts.