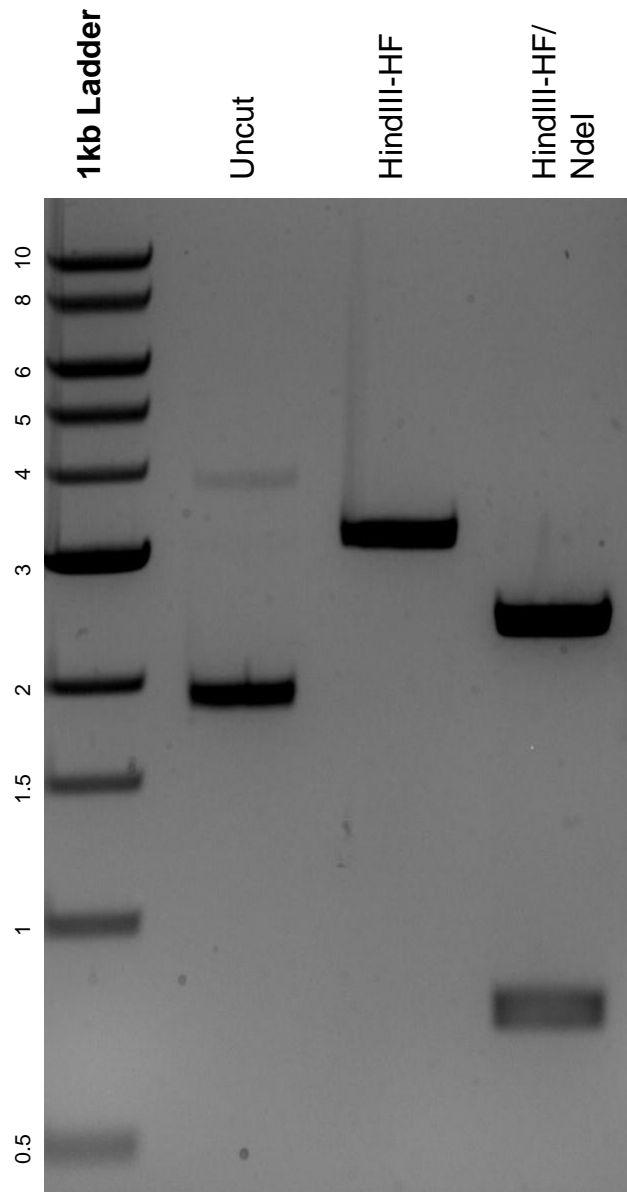


This gel depicts the NEB 1kb Ladder and a digestion of the plasmid pOsU3 with the following enzymes: HindIII-HF and Nde I

**Plasmid 170132**  
pOsU3



DNA digested with HindIII-HF single digest and HindIII-HF/Nde I double digests for 2 hours.  
Gel: 0.8% agarose stained with 15 uL of SYBR Safe.  
Ran for 1.5 hours at 100 volts.