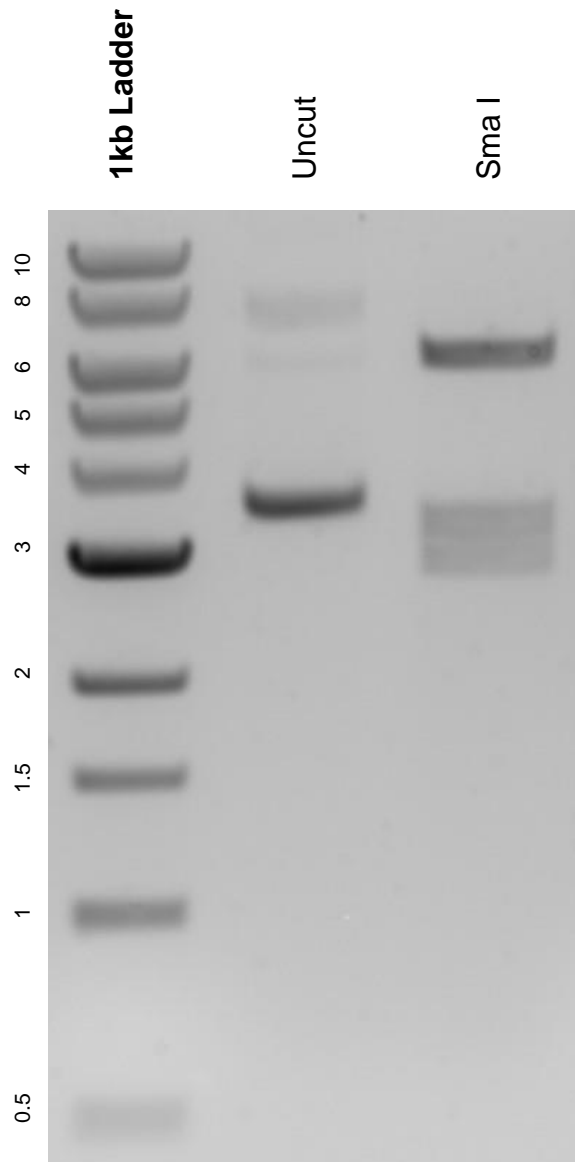


This gel depicts the NEB 1kb ladder and a digestion of the plasmid pAAV.U6gT28.13.hSyn.flex.H2B.RFP with the following enzymes: Sma I.

Plasmid 170376:
pAAV.U6gT28.13.hSyn.flex.H2B.RFP



DNA digested with SmaI single digest for **2 hours**.
Gel: 0.8% agarose stained with 5 uL of ethidium bromide.
Ran for 1.5 hours at 100 volts.