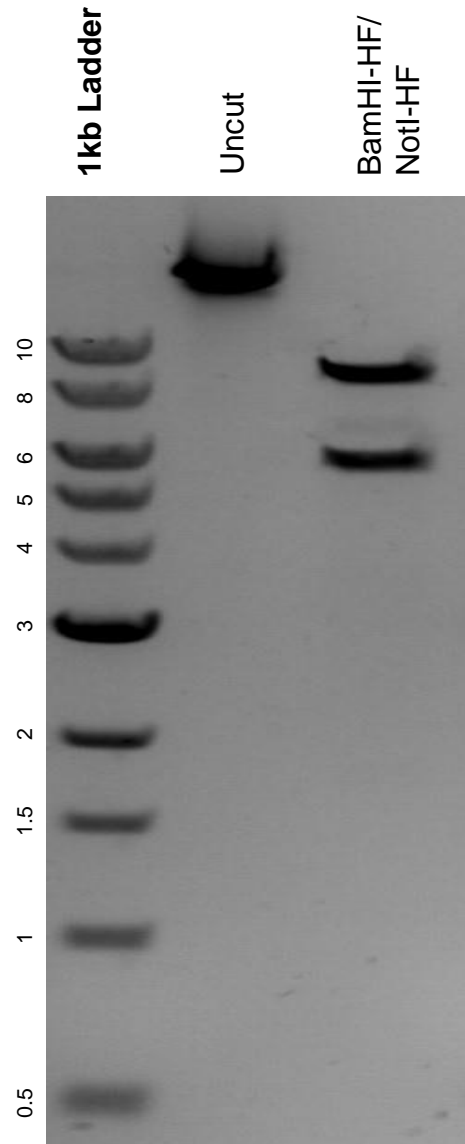


This gel depicts the NEB 1kb Ladder and a digestion of the plasmid PB-TO-hNGN2 with the following enzymes: BamHI-HF and NotI-HF

Plasmid 172115
PB-TO-hNGN2



DNA digested with BamHI-HF/NotI-HF double digests for **2 hours**.
Gel: 0.8% agarose stained with 5 uL of ethidium bromide.
Ran for 1.5 hours at 100 volts.