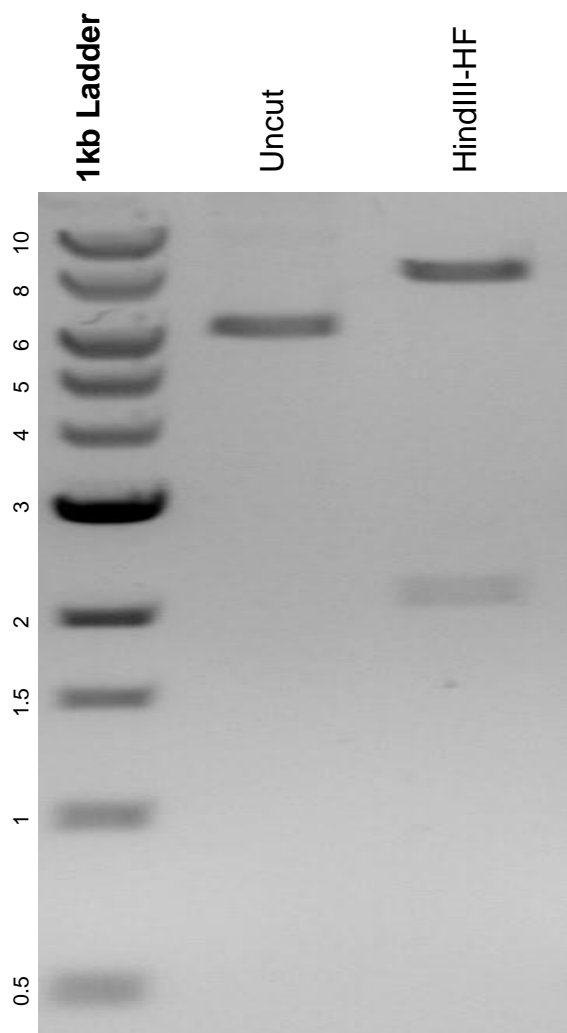


This gel depicts the NEB 1kb Ladder and a digestion of the plasmid pGLOW39 with the following enzyme: HindIII-HF

Plasmid 173068
pGLOW39



DNA digested with HindIII-HF single digest for 2 hours.
Gel: 0.8% agarose stained with 15 uL of SYBR Safe.
Ran for 1.5 hours at 100 volts.