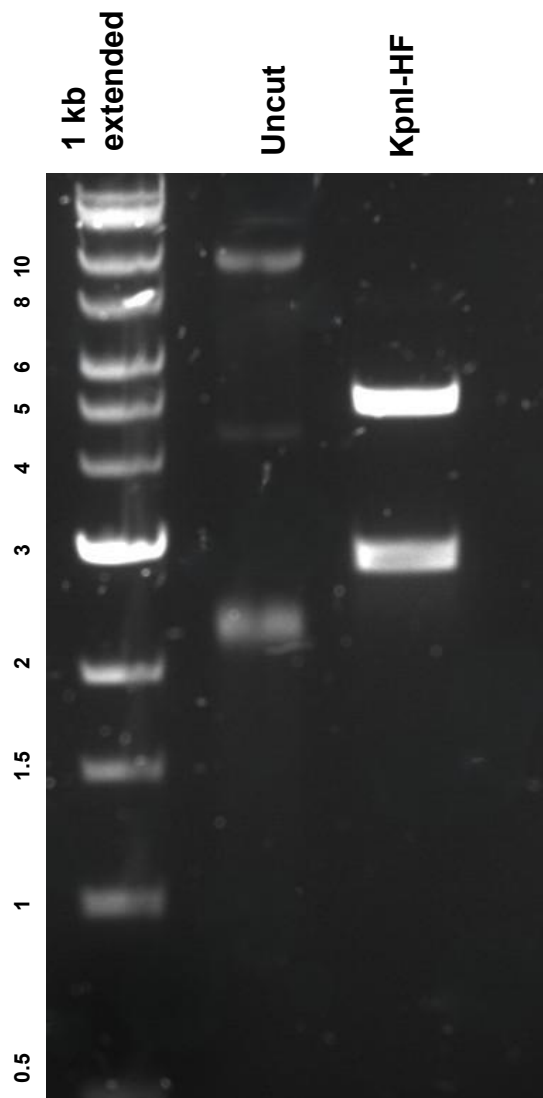


This gel depicts the NEB 1kb extended Ladder and a digestion of the plasmid **EGFP-PIK3CD** with the following enzyme(s): **KpnI-HF**

## Plasmid 174190: EGFP-PIK3CD



DNA was digested for 1 hour and run on a 0.8% agarose gel stained with SYBR Safe for 1 hour and 15 minutes (100 volts).