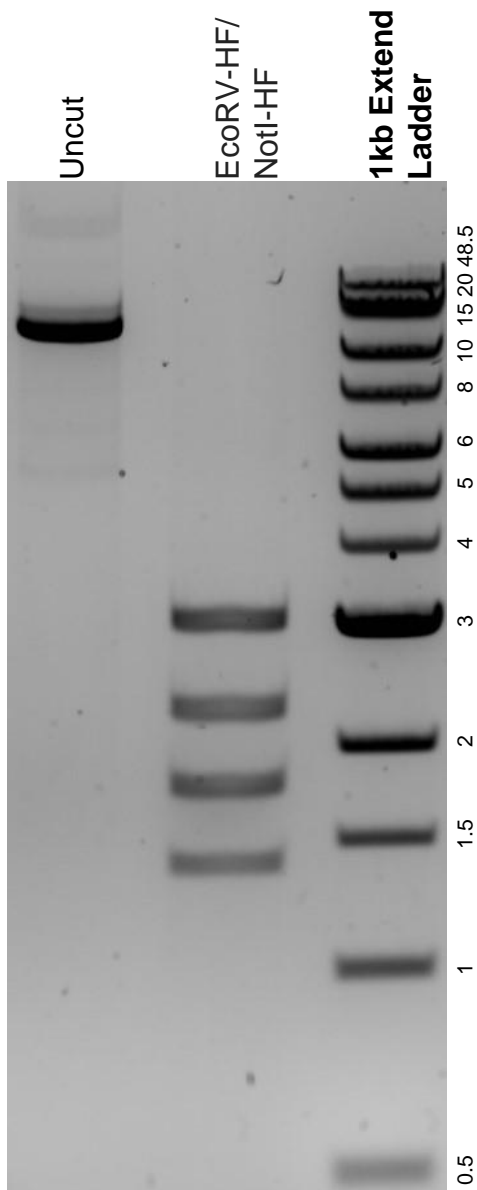


This gel depicts the NEB 1kb extend ladder and a digestion of the plasmid pLR5-CAG-42B3mutAC2(Ser2ph)-SNAP with the following enzymes: EcoRV-HF and NotI-HF.

**Plasmid 174876:**  
pLR5-CAG-42B3mutAC2(Ser2ph)-SNAP



DNA digested with an EcoRV-HF/NotI-HF double digest for **2 hours**.  
Gel: 0.8% agarose stained with 5 uL of SYBR Safe.  
Ran for 1.5 hours at 100 volts.