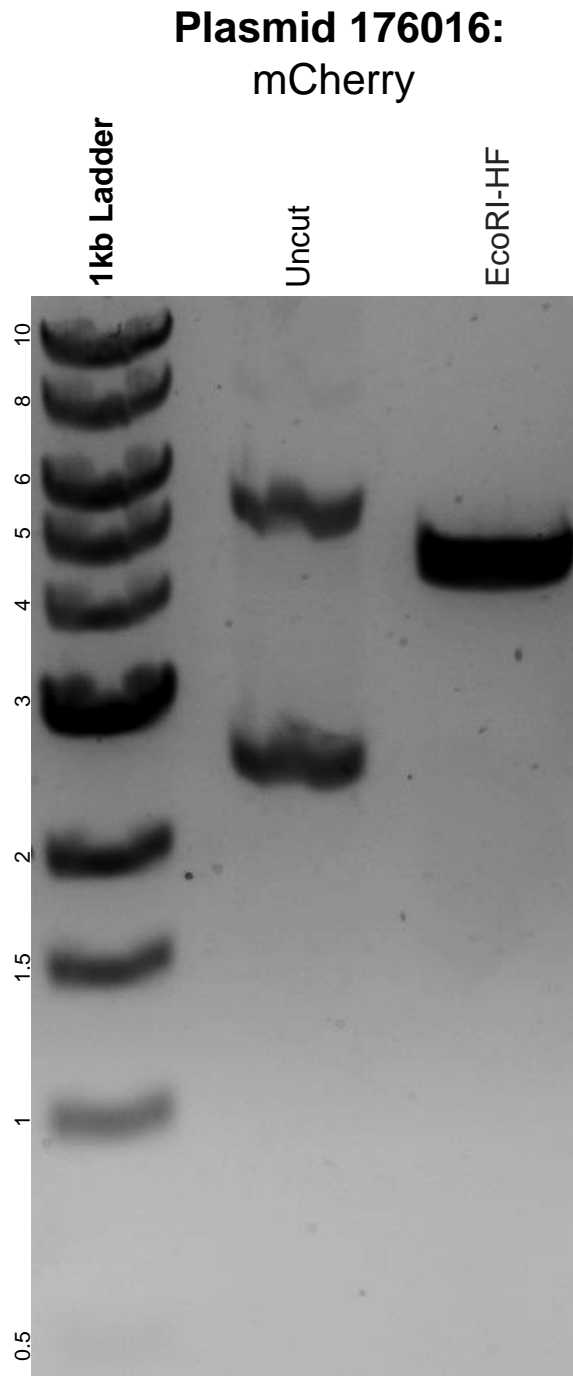


This gel depicts the NEB 1kb ladder and a digestion of the plasmid mCherry with the following enzyme(s): EcoRI-HF.



DNA digested with an EcoRI-HF single digest for **2 hours**.  
Gel: 0.8% agarose stained with 5 uL of SYBR Safe.  
Ran for 1.5 hours at 100 volts.