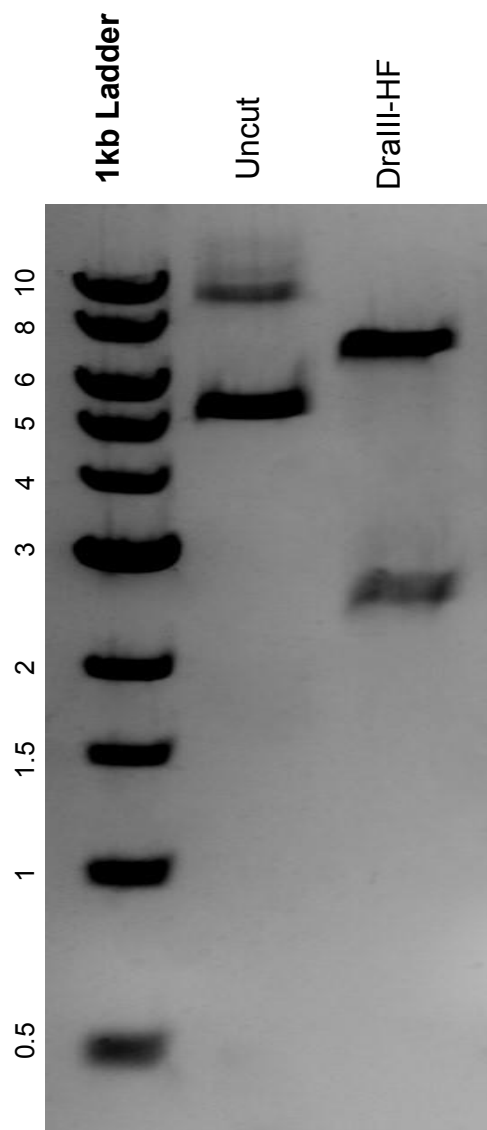


This gel depicts the NEB 1kb Ladder and a digestion of the plasmid pLX304-DCK*-IRES-GFP with the following enzymes: DraIII-HF

Plasmid 176297:
pLX304-DCK*-IRES-GFP



DNA digested with DraIII-HF single digest for **2 hours**.
Gel: 0.8% agarose stained with SYBR Safe.
Ran for 1.25 hours at 100 volts.