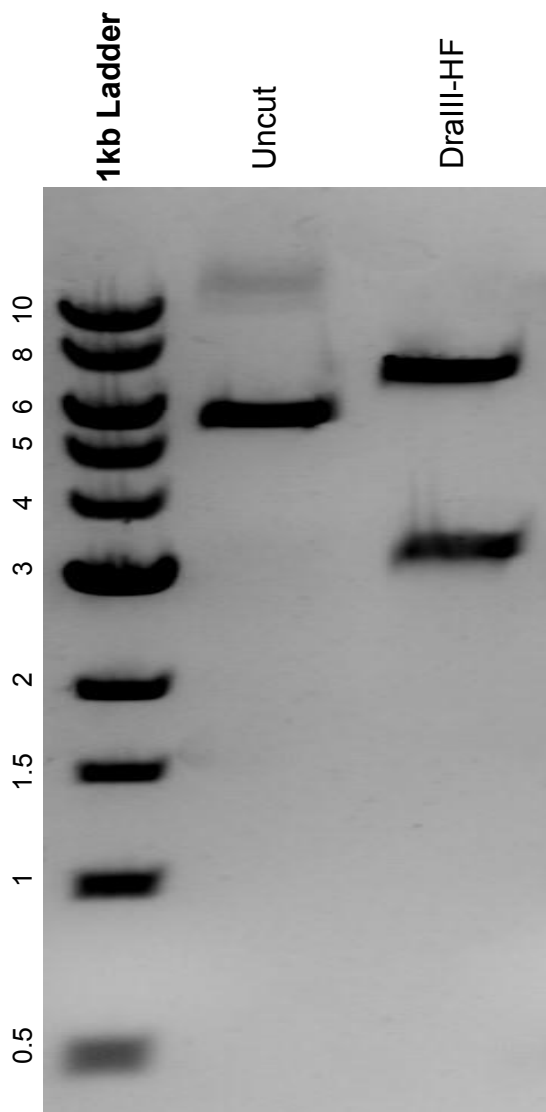


This gel depicts the NEB 1kb Ladder and a digestion of the plasmid pLX304-DCK\*-IRES-Td with the following enzymes: DraIII-HF

**Plasmid 176298:**  
pLX304-DCK\*-IRES-Td



DNA digested with DraIII-HF single digest for **2 hours**.  
Gel: 0.8% agarose stained with SYBR Safe.  
Ran for 1.25 hours at 100 volts.