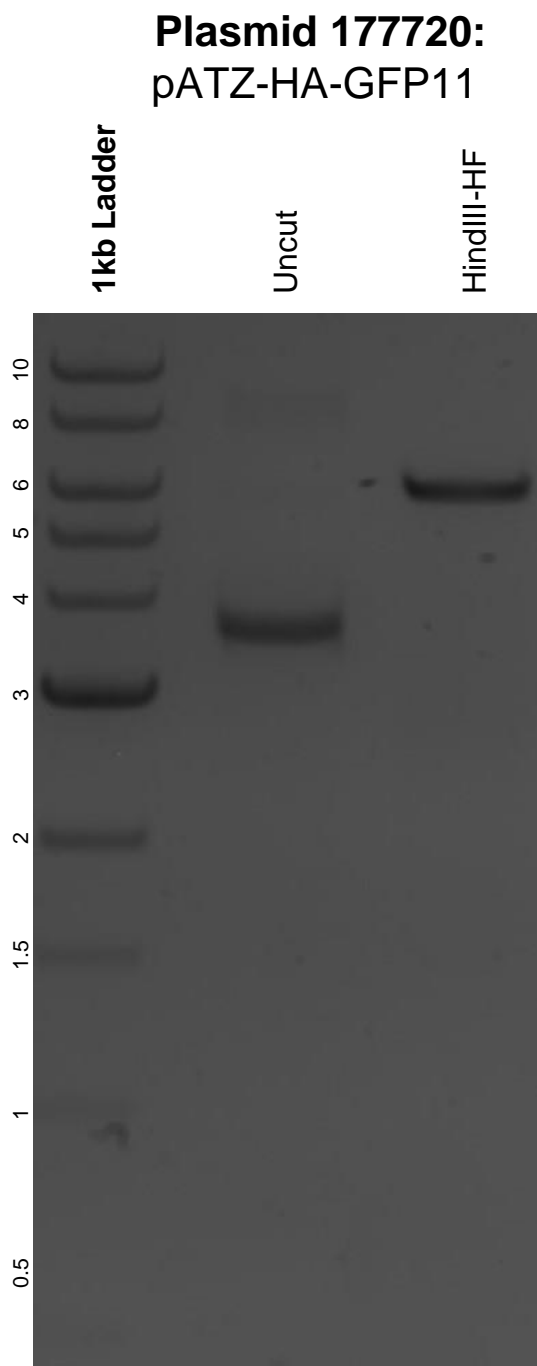


This gel depicts the NEB 1kb ladder and a digestion of the plasmid pATZ-HA-GFP11 with the following enzyme: HindIII-HF.



DNA digested with a HindIII-HF single digest for **2 hours**.  
Gel: 0.8% agarose stained with 5 uL of ethidium bromide.  
Ran for 1.5 hours at 100 volts.