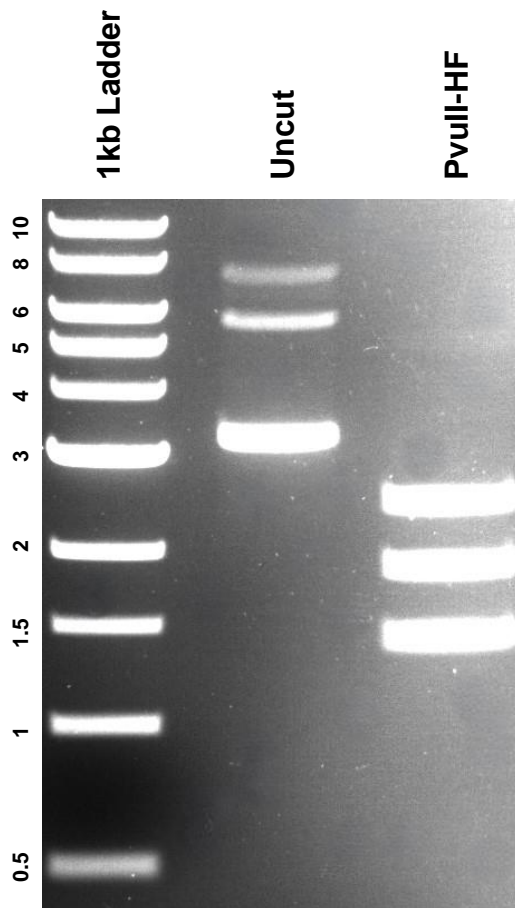


This gel depicts the NEB 1kb Ladder and a digestion of the plasmid **AAV-CAG-FLEX-mCherry** with the following enzyme(s): **PvuII-HF**

**Plasmid 178583**  
**AAV-CAG-FLEX-mCherry**



DNA digested with **PvuII-HF** single for **2 hours**.  
Gel: **0.8%** agarose stained with 5 uL of SYBR Safe.  
Ran for **1.5** hours at **100** volts.