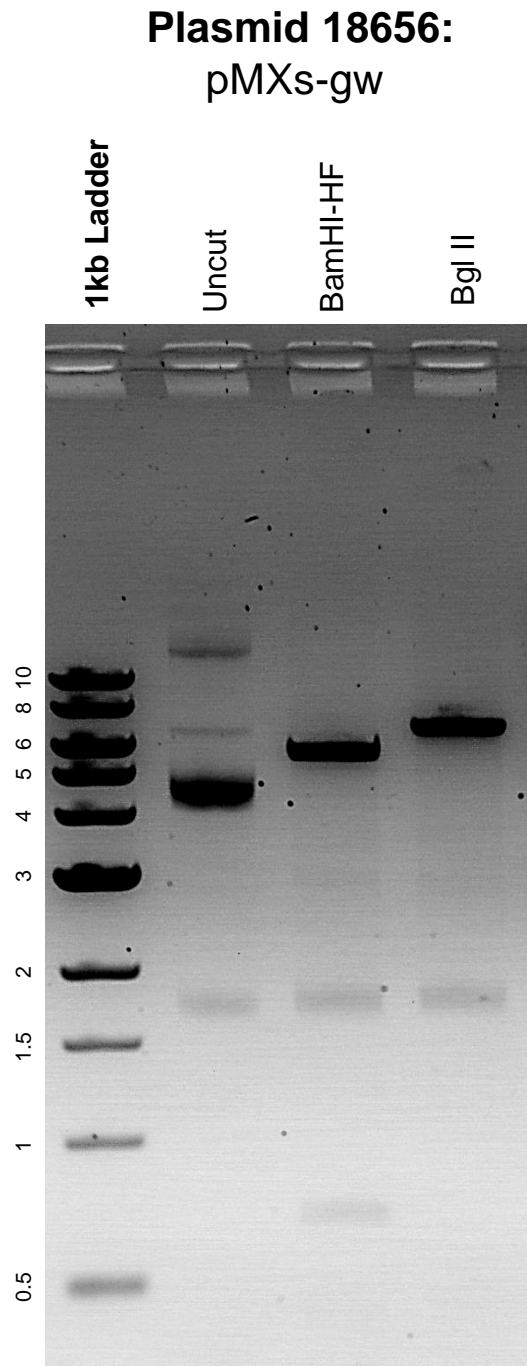


This gel depicts the NEB 1kb ladder and a digestion of the plasmid pMXs-gw with the following enzymes: BamHI-HF and Bgl II.



DNA digested with BamHI-HF and Bgl II single digests for **2 hours**.  
Gel: 0.8% agarose stained with 5 uL of ethidium bromide.  
Ran for 2 hours at 80 volts.