

Certificate of Analysis

Project ID: U9701FB170-2
Construct Information:
Gene Name: CBS (H65R)_pcDNA3.1(+)-N-eGFP
Clone ID: G30406 **Gene Length:** 1668 bp
Cloning Vector: pcDNA3.1(+)-N-eGFP **Cloning Strategy:** KpnI/EcoRI

QC Items	Specifications	Results	
Sequencing Alignment	Sequencing results are consistent with the targeted insert sequence.	Pass	Consistent
Vector Sequence	The flanking sequences of the cloning site are correct.	Pass	Correct
			Shown in the SQD file
Restriction Digests	The size of inserted fragment is correct and free of unexpected bands.	Pass	Correct
			Shown in attachment 1
DNA Quality	Miniprep: 4 µg OD260/280=1.8~2.0 Free of contamination	Pass	≥ 4 µg
			OD260/280=1.89
			Pure
Quality Grade	Research Grade	Pass	Research Grade
Appearance	Clear and free of foreign particles.	Pass	Clear
			Free of foreign particles
Additional Test	N/A	N/A	

NOTE

Shipping at	Plasmid Storing at	Bacstab Storing at	Glycerol Stock Storing at
Room Temperature	-20°C	4°C	-20°C/-80°C

Certified by: *Felix Yu* Date: 03/14/2020

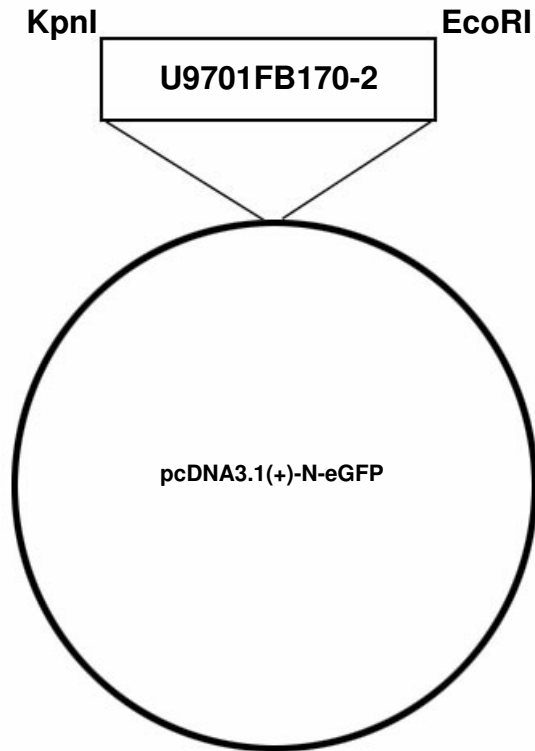
Thank you for your patronage to our Gene services! To maintain this working relationship, we shall be grateful if you can add our webpage URL into your lab website. As a token of appreciation, you will be rewarded by 1,000 EZcoupon™ points. For more information, please contact us by e-mail at web@genscript.com.

For research use only

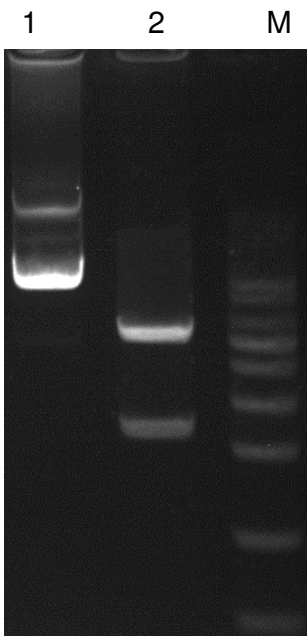
860 Centennial Ave., Piscataway, NJ 08854, USA

Plasmid Construct Map

The gene was cloned in pcDNA3.1(+)-N-eGFP by KpnI/EcoRI .



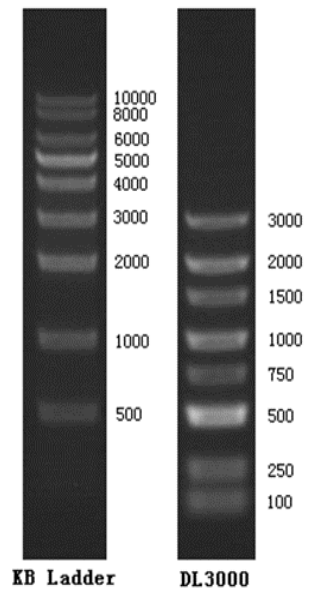
Enzyme Digestion



Lane M: KB Ladder
Lane 1: U9701FB170-2 plasmid
Lane 2: U9701FB170-2 plasmid digested by SmaI

Digestion Conditions:

About 300ng plasmid digested
Digestion in water-bath, 37°C for 40 minutes
1% Agarose Gel



For research use only

860 Centennial Ave., Piscataway, NJ 08854, USA