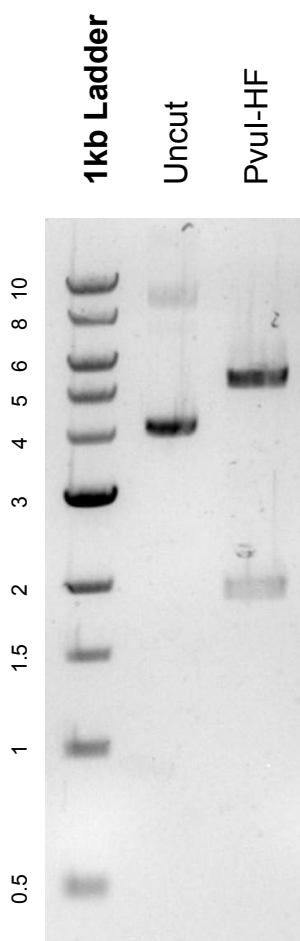


This gel depicts the NEB 1kb Ladder and a digestion of the plasmid **psfaRb-Tn5** with the following enzymes: **PvuI-HF**

Plasmid 183638:
psfaRb-Tn5



DNA digested with a PvuI-HF single digest for **2 hours**.
Gel: 0.8% agarose stained with 22.5 uL of SYBR Safe.
Ran for 1.25 hours at 100 volts.