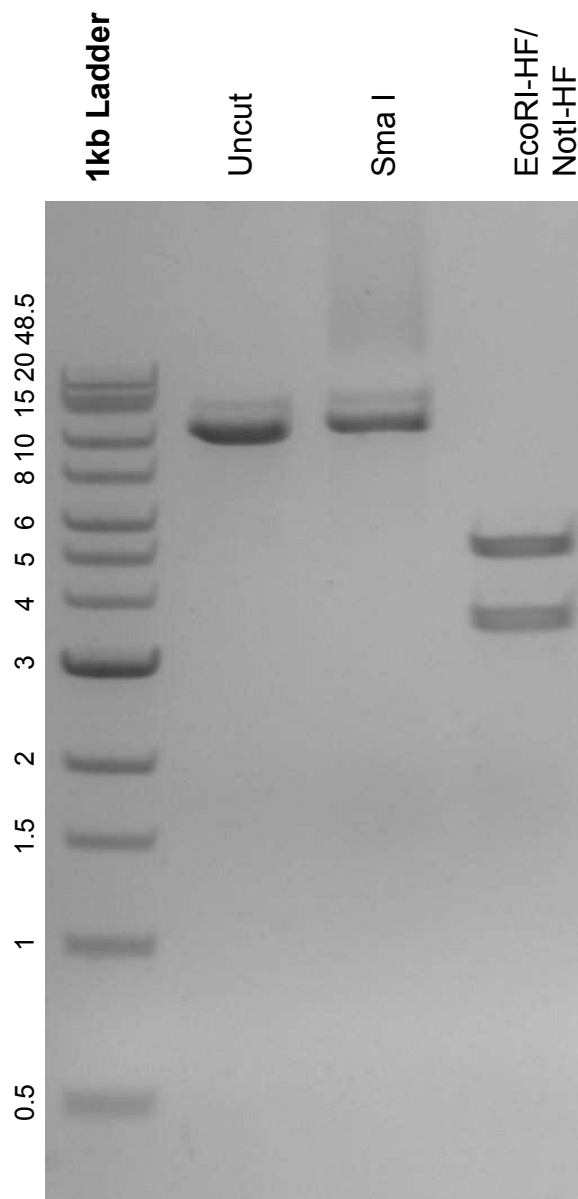


This gel depicts the NEB 1kb Extend Ladder and a digestion of the plasmid PGK-SMASH-NTERM-GFP with the following enzymes: SmaI, EcoRI-HF, NotI-HF

Plasmid 185771:
PGK-SMASH-NTERM-GFP



DNA digested with Sma I single digest and EcoRI-HF/ NotI-HF double digest for **2 hours**.

Gel: 0.8% agarose stained with 5 uL of ethidium bromide.

Ran for 1.5 hours at 100 volts.