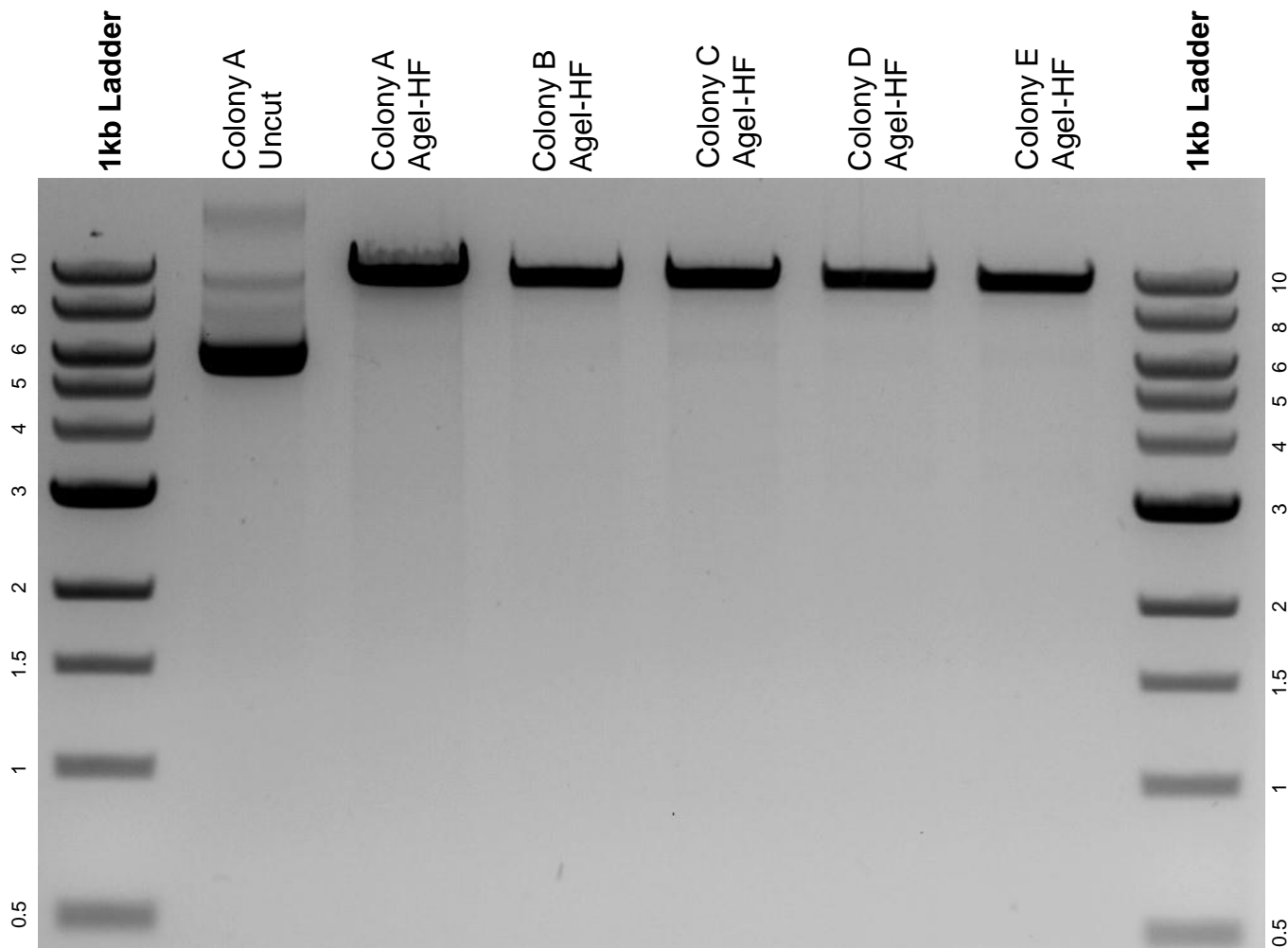


This gel depicts the NEB 1kb ladder and a digestion of the plasmid pLenti PGK Blast DEST (w524-1) with the following enzymes: Agel-HF.

Plasmid 19065:
pLenti PGK Blast DEST (w524-1)



DNA digested with Agel-HF single digests for **2 hours**.
Gel: 0.8% agarose stained with 6 uL of ethidium bromide.
Ran for 1.5 hours at 100 volts.