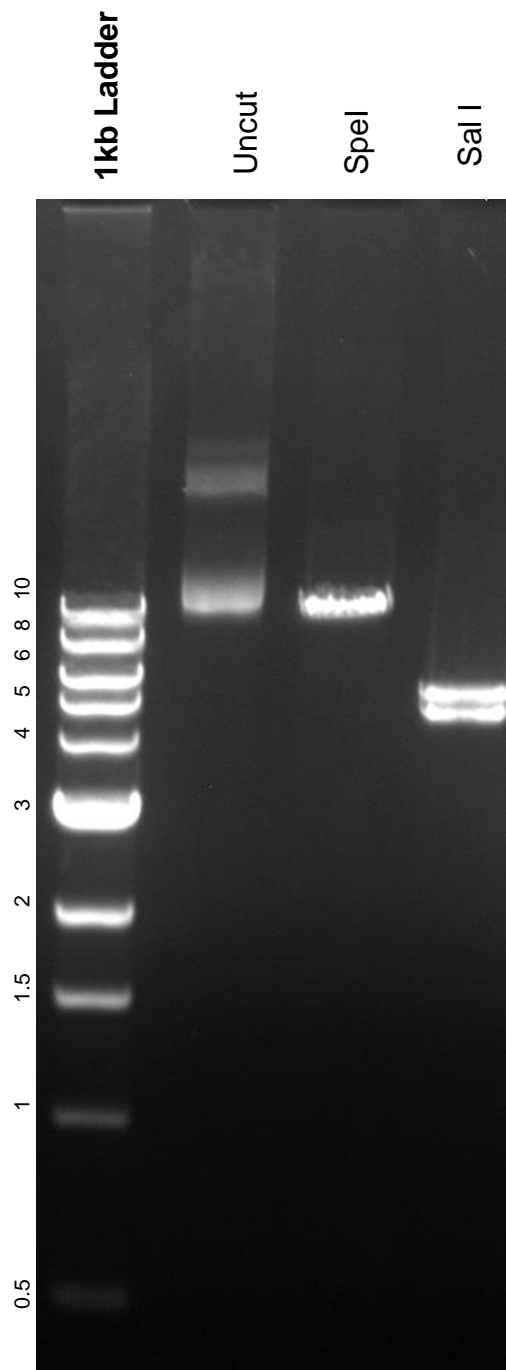


This gel depicts the NEB 1kb ladder and a digestion of the plasmid 19143 with the following enzymes: SpeI and Sal I

**Plasmid 19143
pCMV5 BRGI-Flag**



DNA digested with SpeI and Sal I single digest for **2 hours**
Gel: 1% TAE pre-stained with 4 uL of ethidium bromide
Ran for 2 hours at **100** volts