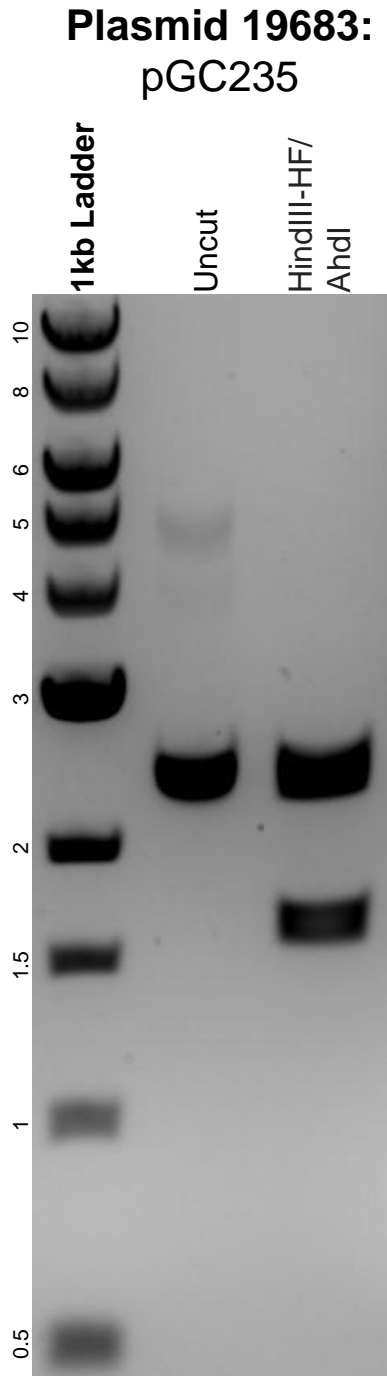


This gel depicts the NEB 1kb ladder and a digestion of the plasmid pGC235 with the following enzyme(s): HindIII-HF and AhdI.



DNA digested with a HindIII-HF/AhdI double digest for **2 hours**.
Gel: 0.8% agarose stained with 5 uL of SYBR Safe.
Ran for 1.5 hours at 100 volts.