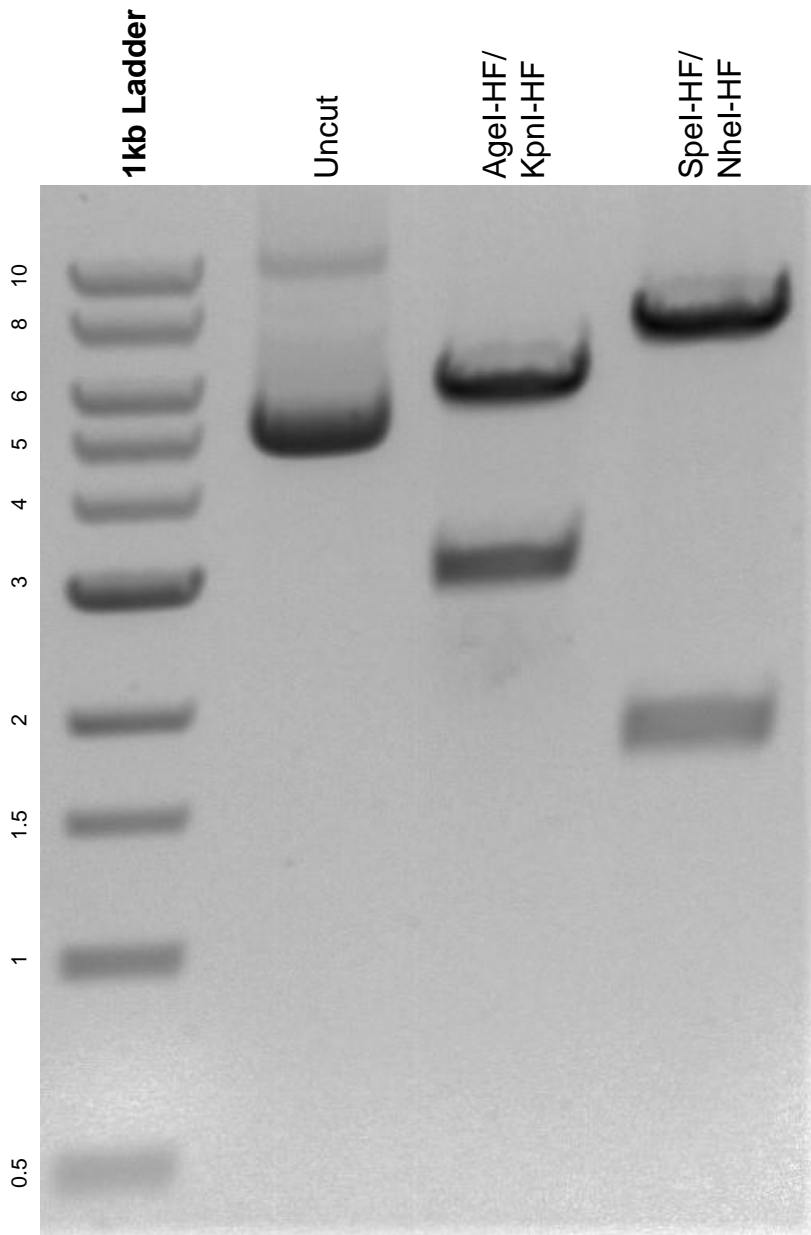


This gel depicts the NEB 1kb ladder and a digestion of the plasmid pLenti CMV GFP DEST (736-1) with the following enzymes: AgeI-HF, KpnI-HF, SpeI-HF, and NheI-HF.

**Plasmid 19732:**  
pLenti CMV GFP DEST (736-1)



DNA digested with AgeI-HF/ KpnI-HF and SpeI-HF/ NheI-HF double digests for **2 hours**.

Gel: 0.8% agarose stained with 6 uL of ethidium bromide.

Ran for 1.5 hours at 100 volts.