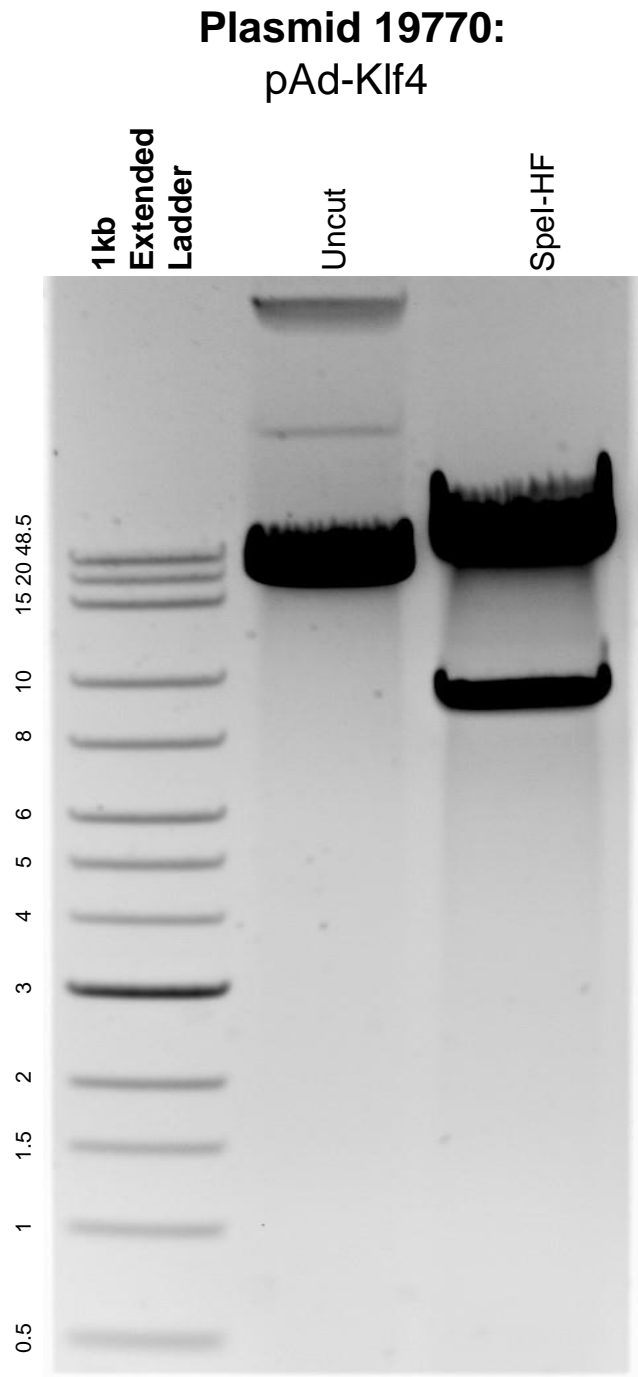


This gel depicts the NEB 1kb extended ladder and a digestion of the plasmid pAd-Klf4 with the following enzymes: SpeI-HF.



DNA digested with SpeI-HF single digest for **2 hours**.
Gel: 0.5% agarose stained with 6 uL of ethidium bromide.
Ran for 1.5 hours at 100 volts.